

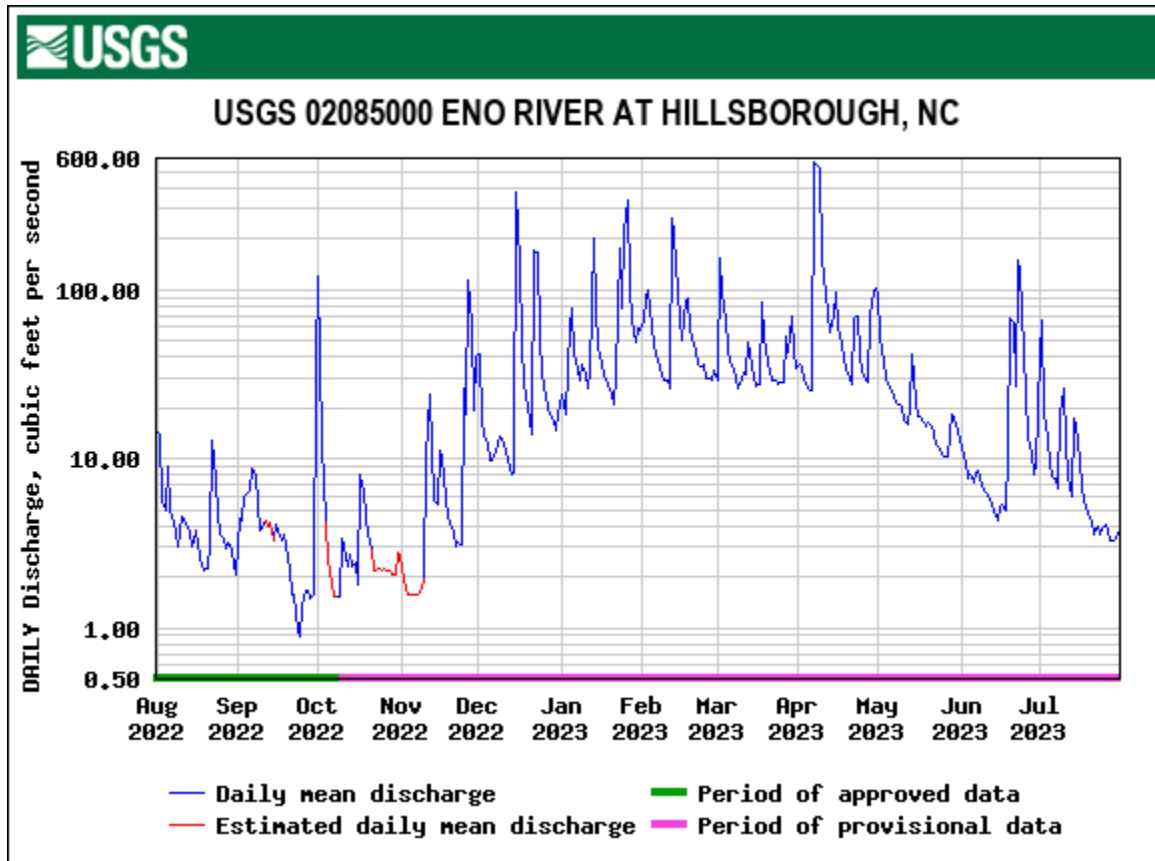
ENO RIVER ANNUAL SUMMARY REPORT

August 2022 – July 2023

August 31, 2023

ENO RIVER DISCHARGE, PRECIPITATION AND WITHDRAWALS

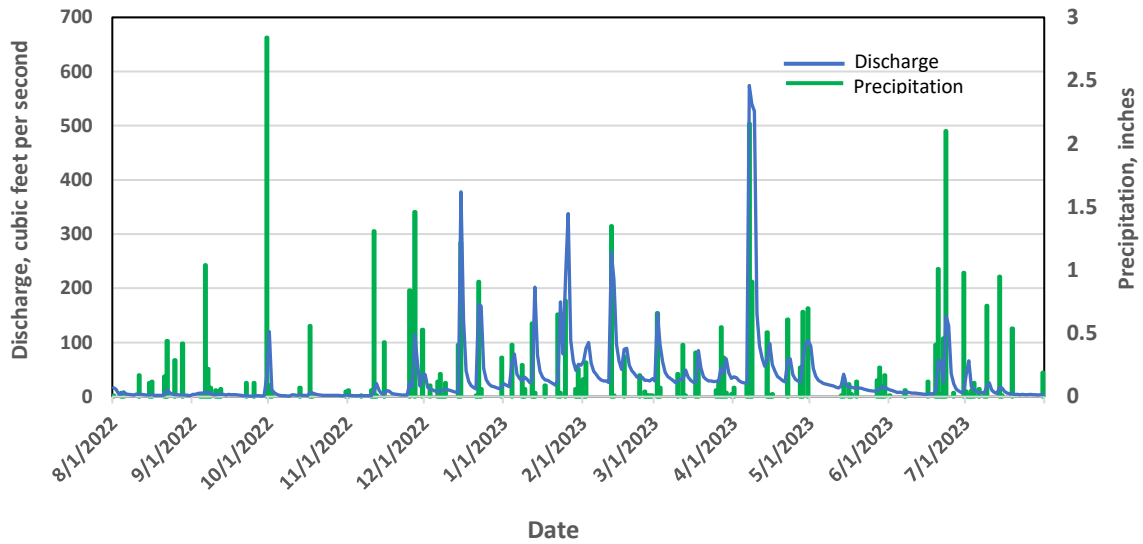
August 2022 – July 2023



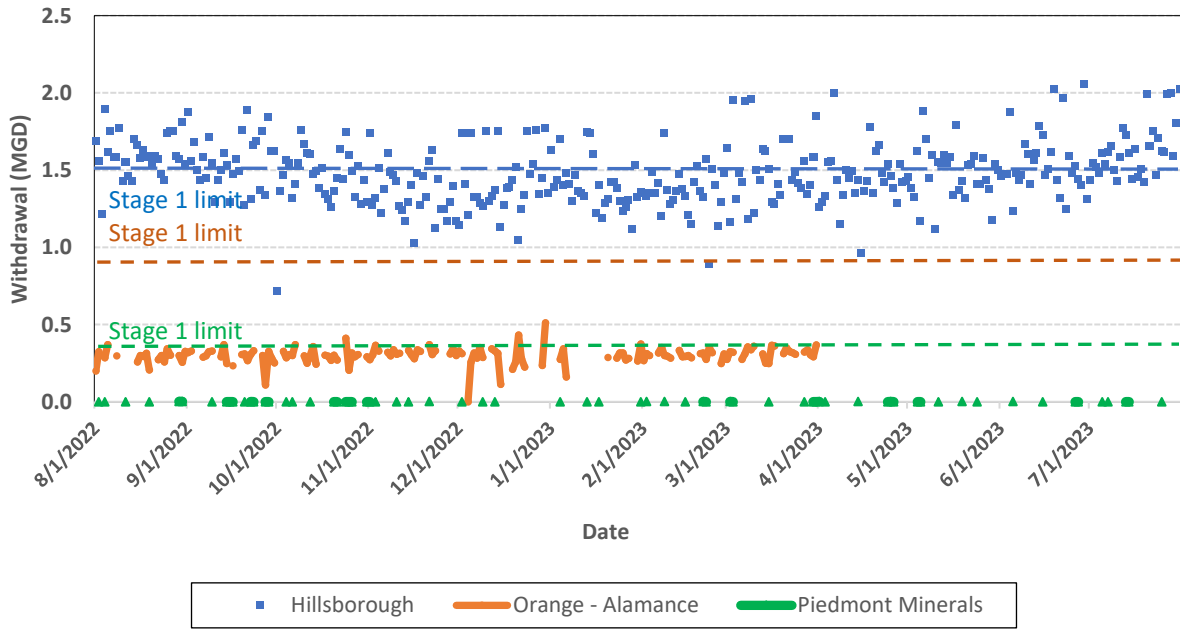
Long term (30-yr) precipitation record from the NOAA station in Carrboro, NC

	<u>Compared to 30-yr record</u>	
	<u>8/22-7/23</u>	<u>8/93-7/23</u>
Mean Q	34.1 cfs	57.6 cfs
Median Q	14.9 cfs	19.0 cfs
<10 cfs	152 days	129 days
<3 cfs	49 days	34 days
Precipitation	38.8 in	49.0 in

Eno River Discharge and Precipitation at Huckleberry Spring August 2022 - July 2023



Eno River Withdrawals August 2022 - July 2023



RESTRICTIONS

Month	Dates of Restrictions:		
	No Restrictions	Stage 1	Stage 2
August 2022		1-31	
September 2022		1-30	
October 2022		1-31	
November 2022		1-30	
December 2022	2-31	1	
January 2023	1-31		
February 2023	1-28		
March 2023	1-31		
April 2023	1-30		
May 2023	1-31		
June 2023	1-9, 26-30	10-25	
July 2023	1-22	23-31	

August 2022 - December 2022

Days of Restrictions

STAGE 1: 123 (153 last year)

STAGE 2: 0 (0 last year)

January 2023 - July 2023

Days of Restrictions

STAGE 1: 25 (23 last year)

STAGE 2: 0 (0 last year)

Hillsborough:

Avg. Total use: 1.477 mgd
 Avg. Eno use: 1.477 mgd
 (when operating: 1.477 mgd)

Avg. Total use: 1.484 mgd
 Avg. Eno use: 1.484 mgd
 (when operating: 1.484 mgd)

Orange-Alamance:

Avg. Total use: 0.628 mgd
 Avg. Eno use: 0.190 mgd
 (when operating: 0.297 mgd)

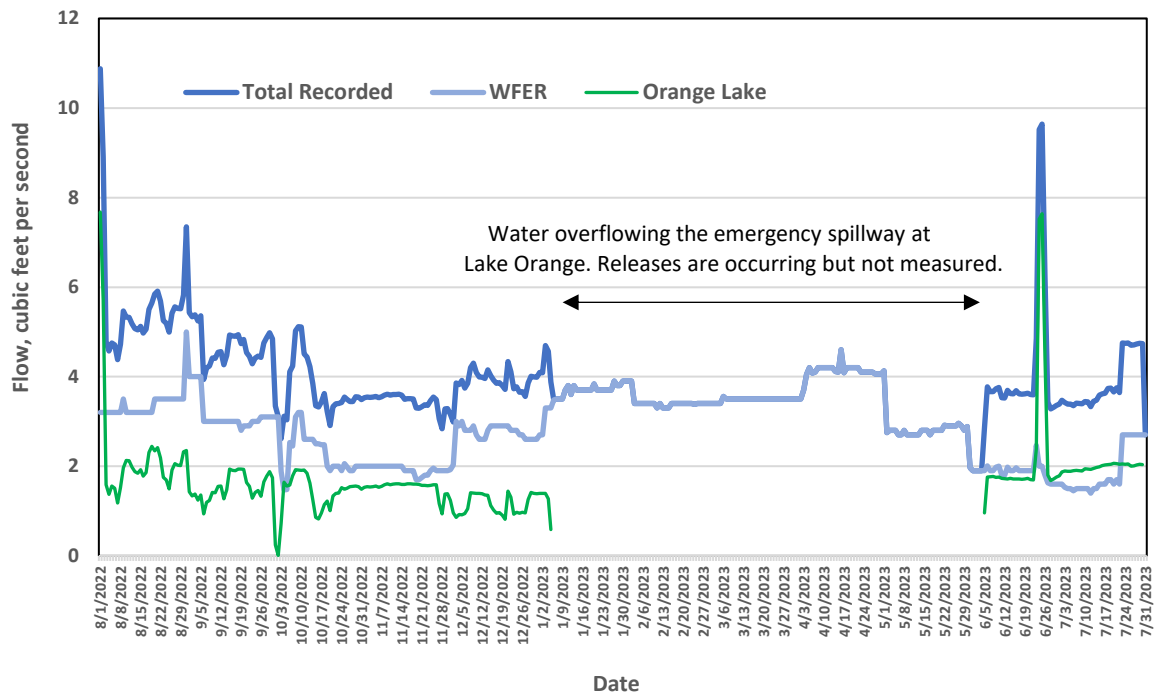
Avg. Total use: 0.645 mgd
 Avg. Eno use: 0.211 mgd
 (when operating: 0.296 mgd)

Resco Products:

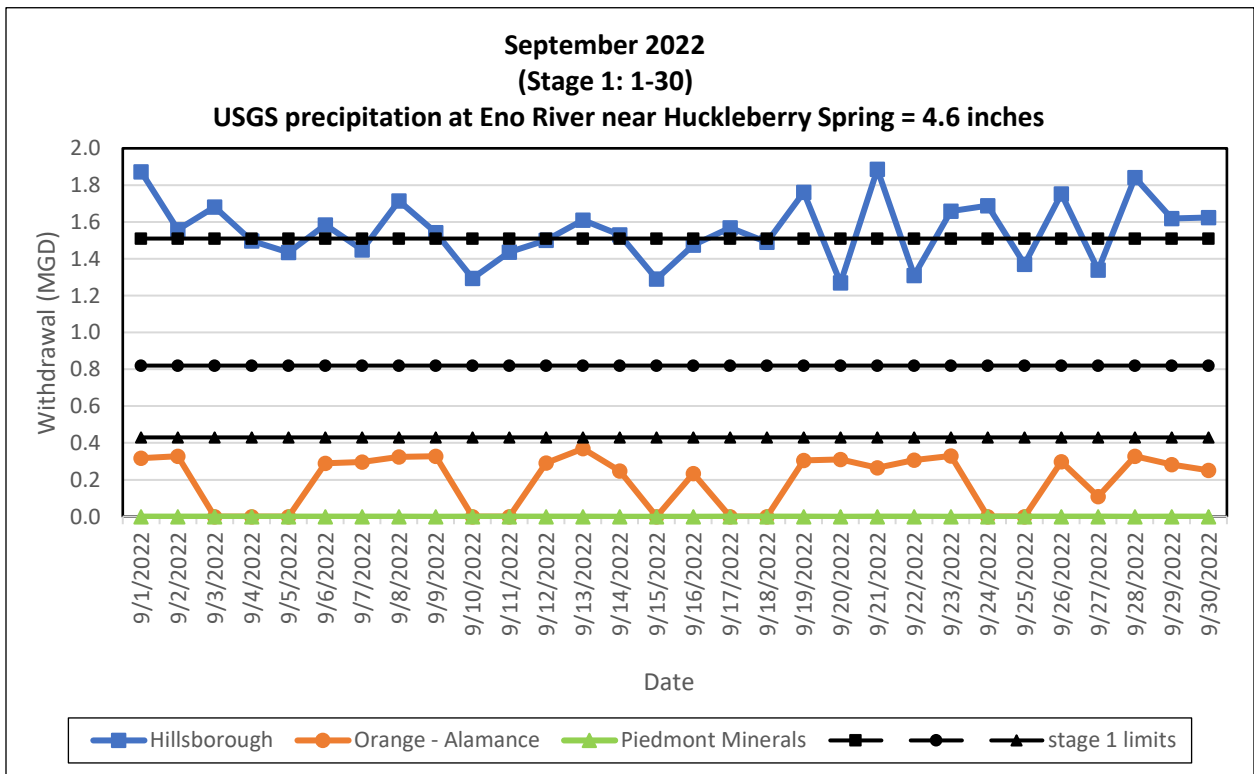
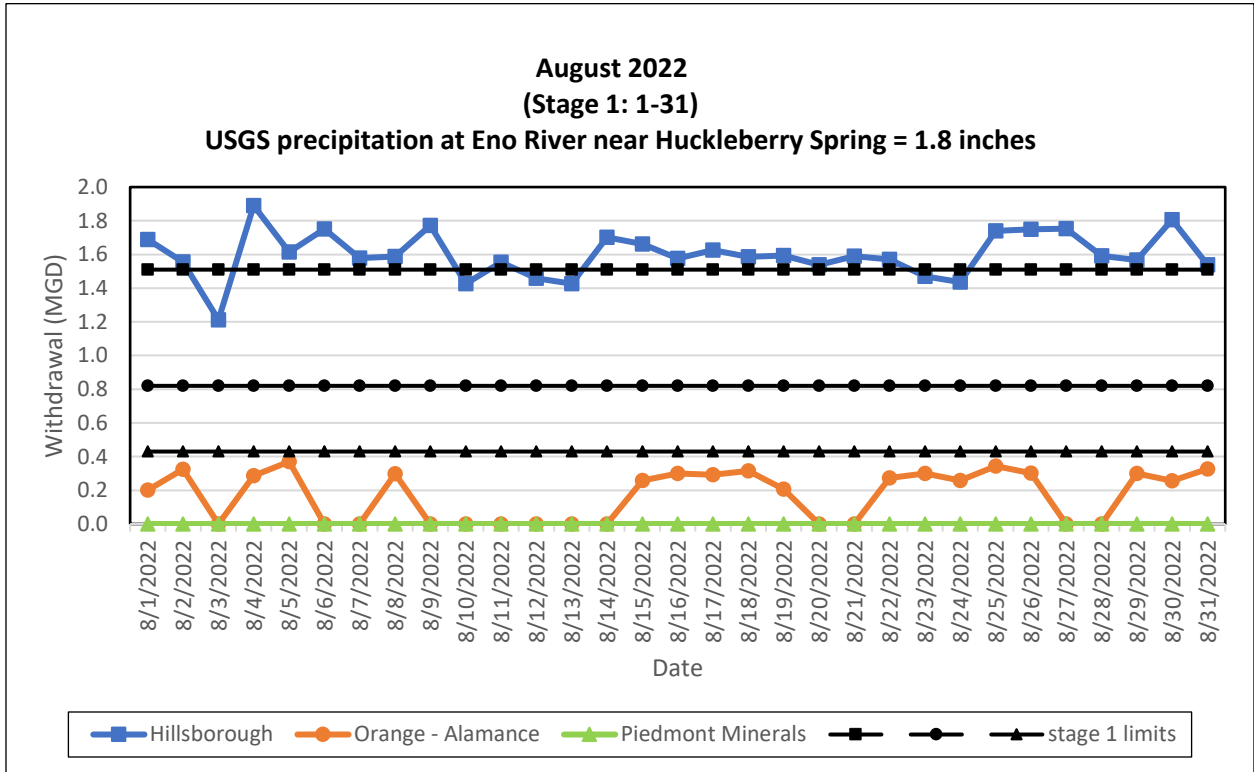
Avg. Total use: 0.00003 mgd
 Avg. Eno use: 0.00003 mgd
 (when operating: 0.00010 mgd)

Avg. Total use: 0.00003 mgd
 Avg. Eno use: 0.00003 mgd
 (when operating: 0.00020 mgd)

FLOW RELEASES TO ENO RIVER August 2022 - July 2023

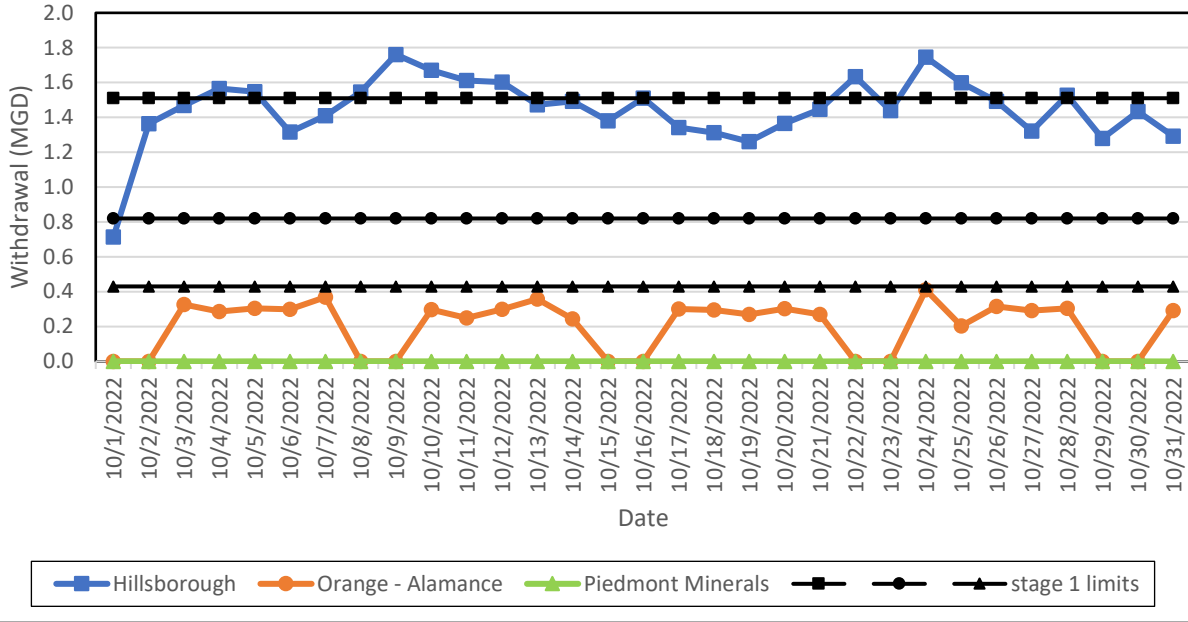


ENO RIVER WITHDRAWALS Monthly



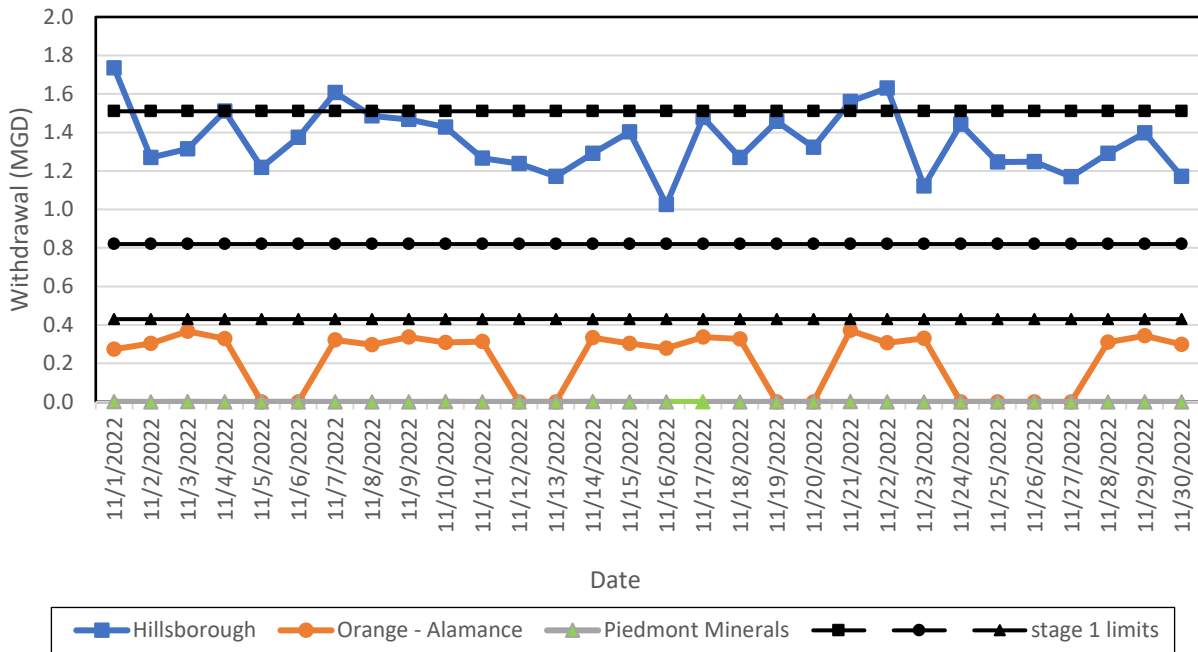
**October 2022
(Stage 1: 1-31)**

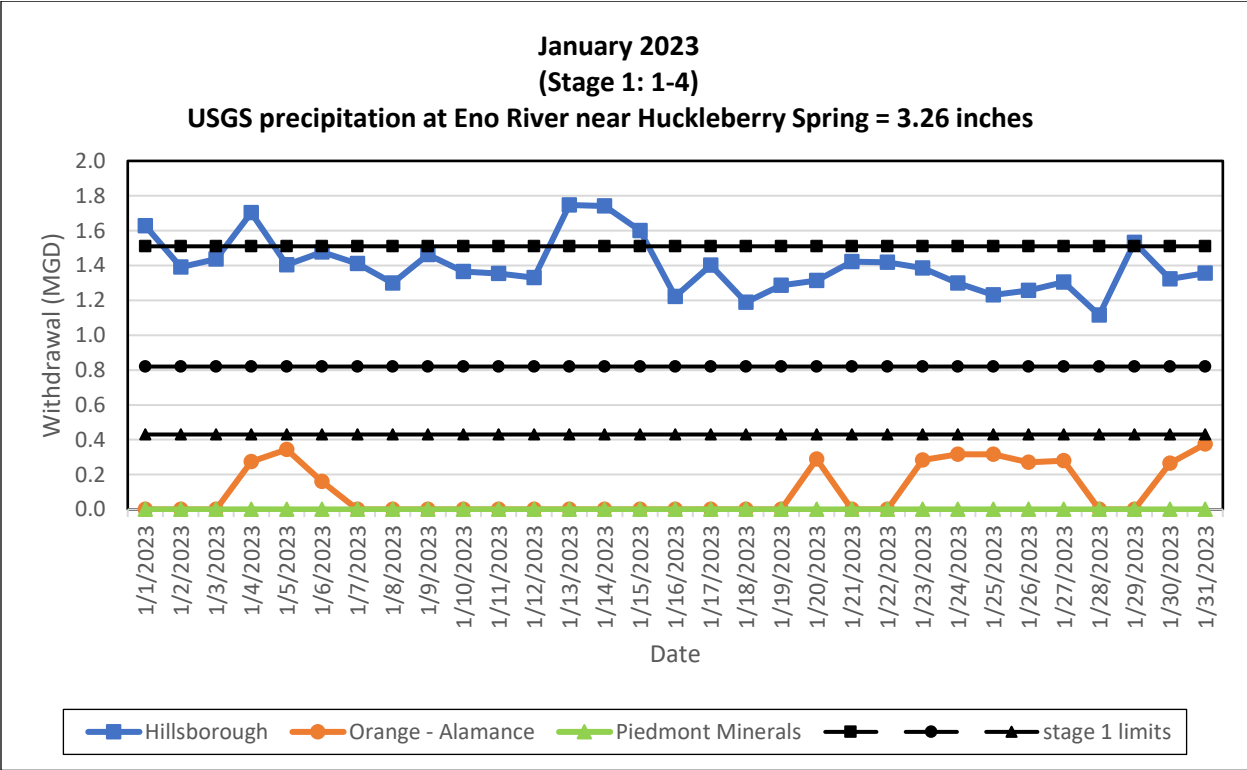
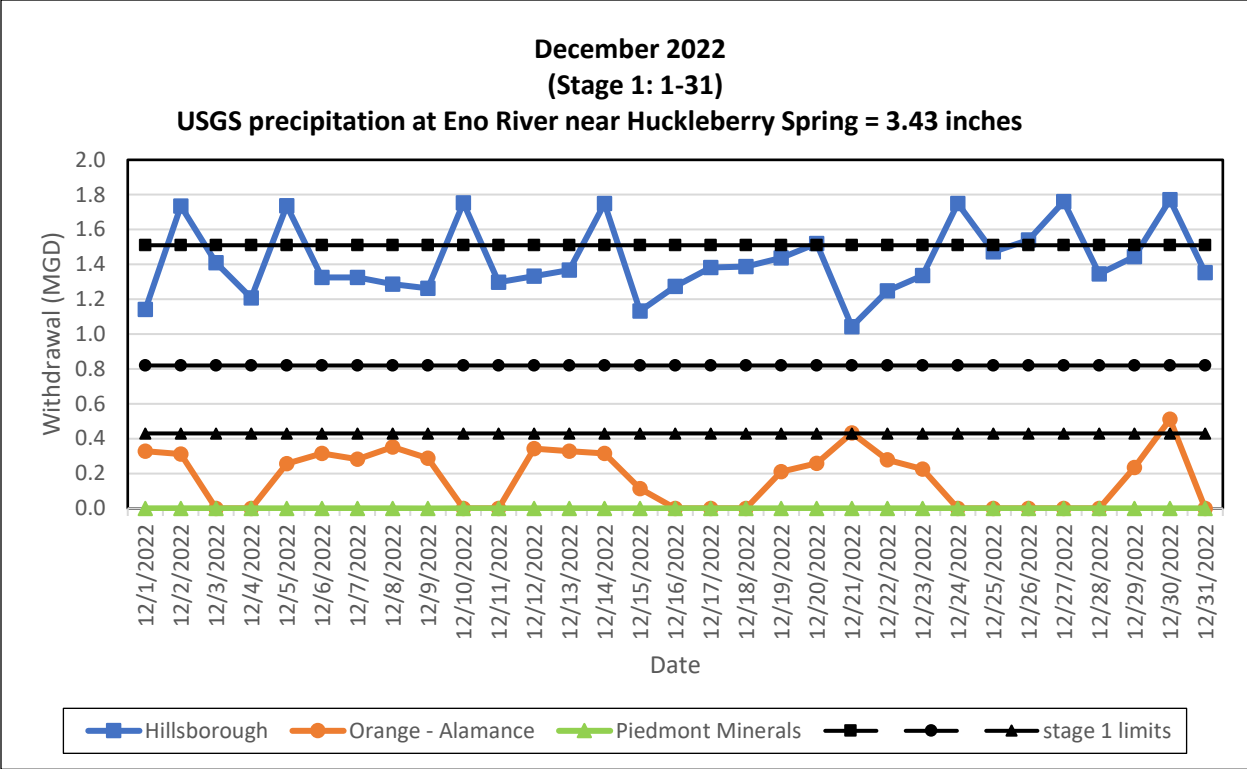
USGS precipitation at Eno River near Huckleberry Spring = 0.8 inches



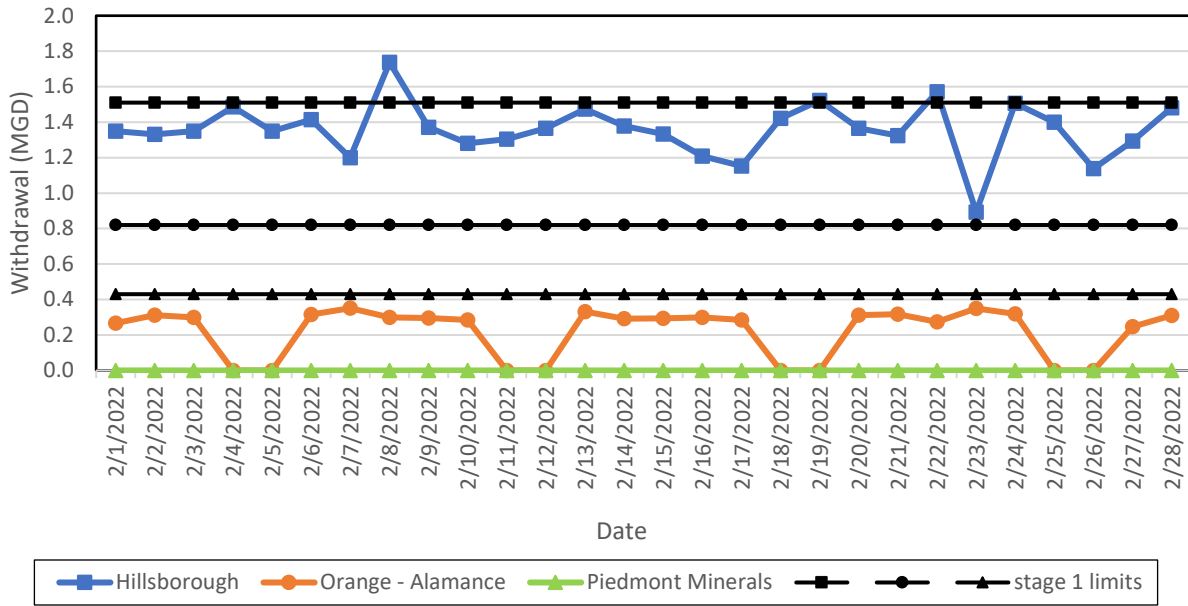
**November 2022
(Stage 1: 1-30)**

USGS precipitation at Eno River near Huckleberry Spring = 4.69 inches





**February 2023
(no restrictions)**
USGS precipitation at Eno River near Huckleberry Spring= 2.33 inches



**March 2023
(no restrictions)**
USGS precipitation at Eno River near Huckleberry Spring = 3.03 inches

