

ENO RIVER WATER USERS MEETING
10:00 A.M.

September 2, 2008
Hillsborough, NC

Meeting Highlights

Attendees:

Linwood Peele, Jim Mead & Wayne Howard – DWR;
Michael L. Douglas – DEH/PWSS-RRO;
Brian Strong & Emily Parish – DPR;
Dave Cook – Eno River State Park;
Kevin Lindley – Orange County;
Kenny Keel, Julie Vance – Hillsborough;
Ben Lloyd & Roger Hellard – Orange-Alamance;
Randy Thomas – Piedmont Minerals;
Robin Jacobs, Don Cox – Eno River Association.

Historical Operations:

Linwood Peele provided the history and overview of Eno River Voluntary Capacity Use Agreement.

- Provided a brief history of how the drought of the 1980's lead to the Agreement.
- The Environmental Management Commission (EMC) declared if the three users could voluntarily manage their Eno River withdrawals, Capacity Use Area permitting could be avoided.

Gages and Weirs:

- Lake Orange reservoir is currently in Stage 1 restrictions.
- Releases from Lake Orange reservoir have been drastically curtailed due to high instream flows related to recent rainfall activity.
- Hillsborough is currently releasing 2.26 mgd to meet the minimum release requirement, offset the Town's total demand and to reduce the rate of decline of Lake Orange reservoir.

Water Use & Stream Flow Report:

Wayne Howard provided and discussed several graphs and tables.

- **Graph 1:** Eno River Average Weekly Withdrawals (When Operating Average);
August 2007 – July 2008 with level of restrictions
- **Graph 2:** Eno River Average Weekly Withdrawals (7-day Average);
August 2007 – July 2008 with level of restrictions
- **Graph 3:** Eno River @ Hillsborough Gage #02085000;
Flow vs. Date (flow less than 10 cfs for August 2007 – July 2008)
- **Graph 4:** Eno River @ Hillsborough Gage #02085000;
Flow vs. Date (August 2007 – July 2008)
- **Table 1:** Summary for 2008 Stages of Restriction. (August 2007 – July 2008)
Provided number of weeks at each level of restrictions.
Provided average and total use for the Eno River Users.

Summary for 2008 Annual Meeting
(covering Summer 2007 through Summer 2008)

Month	Restrictions	Dates
August 2007	Stage 2	August 1 – 31
September 2007	Stage 2 Stage 3 Stage 4	September 1 – 4 September 5 – 27 September 28 – 30
October 2007	Stage 4	October 1 – 31
November 2007	Stage 4 Stage 5	November 1 – 7 November 8 – 30
December 2007	Stage 5	December 1 -31
January 2008	Stage 5 Stage 4	January 1 – 7 January 8 – 31
February 2008	Stage 4 Stage 3	February 1 – 13 February 14 – 29
March 2008	Stage 3 Stage 2 Stage 1	March 1 – 5 March 6 – 11 March 31
April 2008	Stage 1	April 1 – 6
May 2008	NONE	*
June 2008	Stage 1	June 9 – 30
July 2008	Stage 1	July 1 – 31

August - December 2007

Weeks of Restrictions

STAGE 2: 5 weeks, 0 days**STAGE 3:** 3 weeks, 2 days**STAGE 4:** 5 weeks, 6 days**STAGE 5:** 7 weeks, 5 days**January - July 2008**

Weeks of Restrictions

STAGE 1: 8 weeks, 3 days**STAGE 2:** 0 weeks, 6 days**STAGE 3:** 3 weeks, 0 days**STAGE 4:** 6 weeks, 3 days**STAGE 5:** 1 weeks, 0 days**Hillsborough:**

Total use: 1.188 mgd
Avg. Eno use: 1.188 mgd
(when operating: 1.188 mgd)

Total use: 1.119 mgd
Avg. Eno use: 1.119 mgd
(when operating: 1.119 mgd)

Orange-Alamance:

Total use: 0.624 mgd
Avg. Eno use: 0.068 mgd
(when operating: 0.282 mgd)

Total use: 0.614 mgd
Avg. Eno use: 0.153 mgd
(when operating: 0.300 mgd)

Piedmont Minerals:

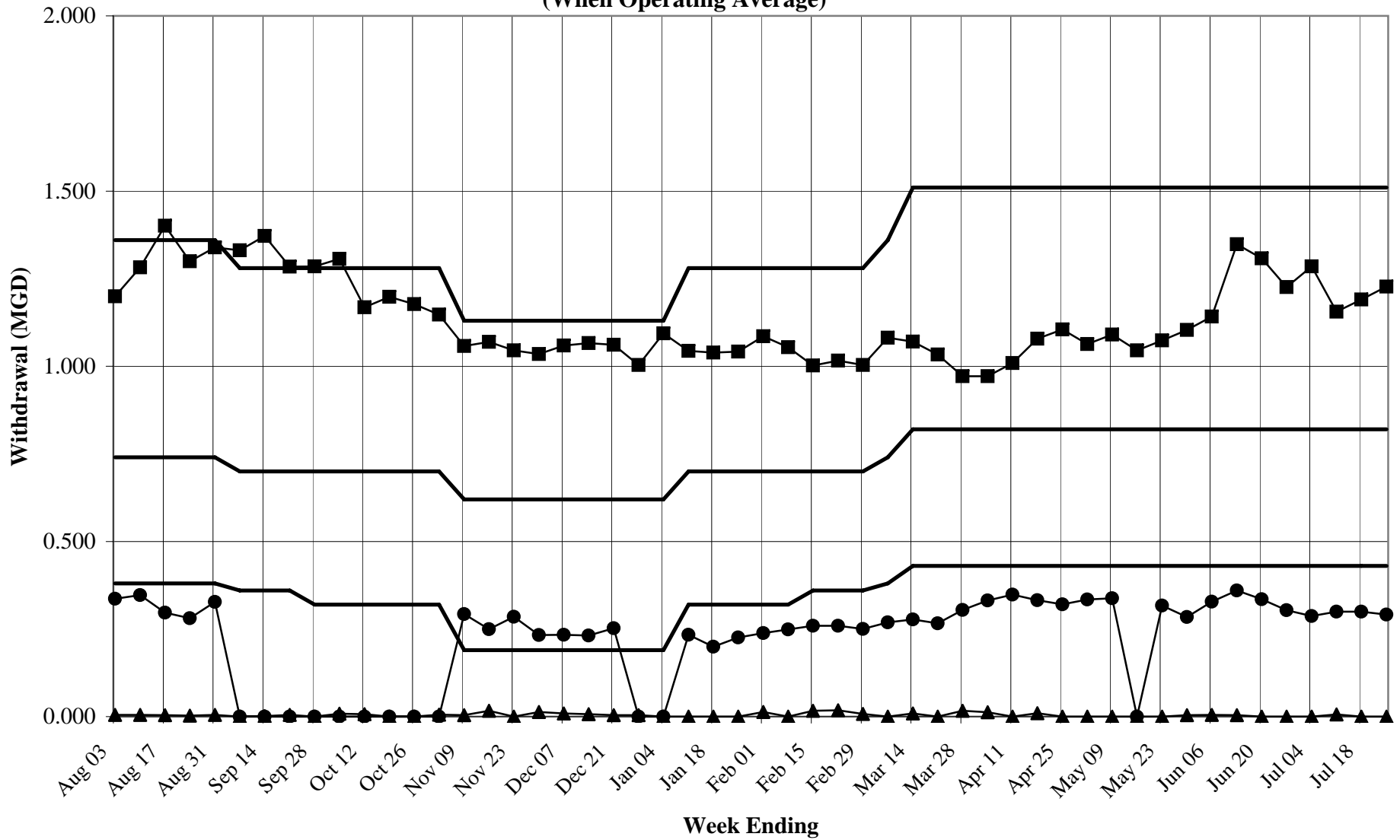
Total use: 0.001 mgd
Avg. Eno use: 0.001 mgd
(when operating: 0.006 mgd)

Total use: 0.001 mgd
Avg. Eno use: 0.001 mgd
(when operating: 0.009 mgd)

* Note: Streamflows exceeded 10 cfs for this period.

ENO RIVER AVERAGE WEEKLY WITHDRAWALS

August 2007 - July 2008
(When Operating Average)

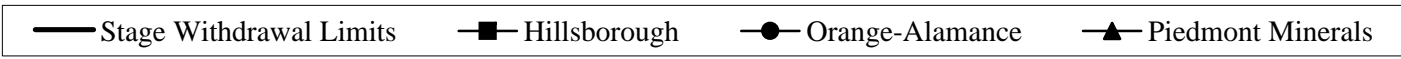
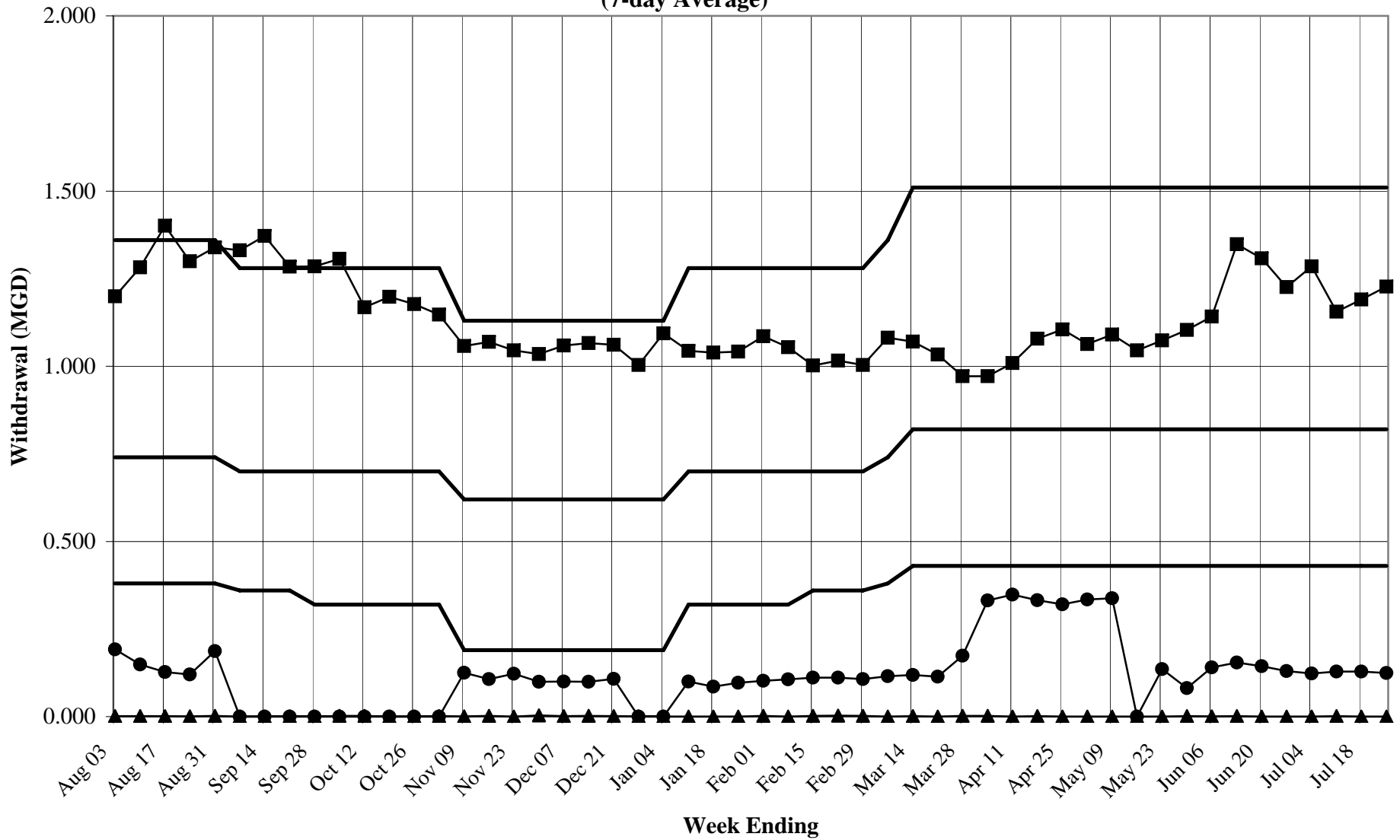


— Stage Withdrawal Limits ■ Hillsborough ● Orange-Alamance ▲ Piedmont Minerals

ENO RIVER AVERAGE WEEKLY WITHDRAWALS

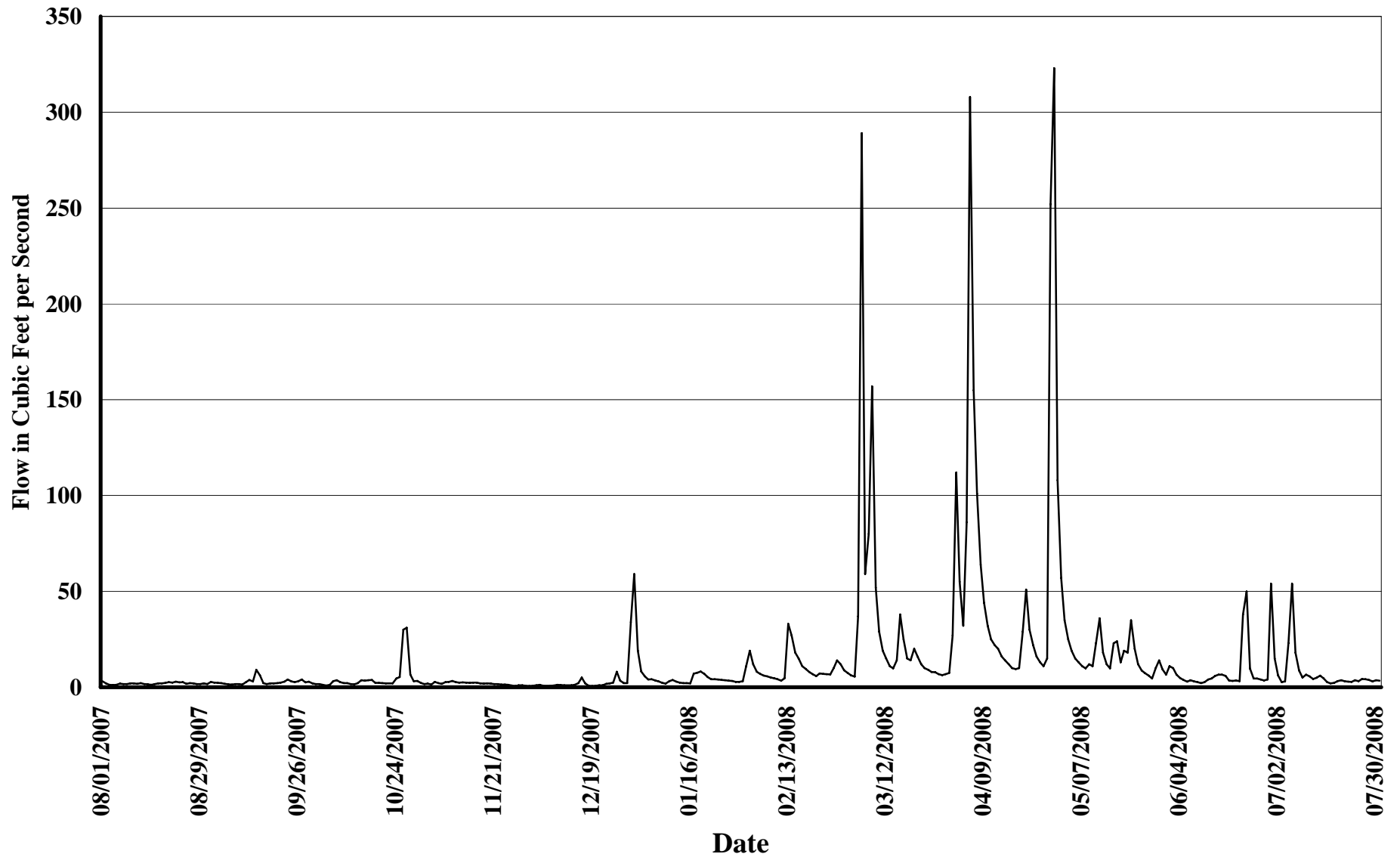
August 2007 - July 2008

(7-day Average)



ENO RIVER @ HILLSBOROUGH, #02085000

August 1, 2007 - July 31, 2008

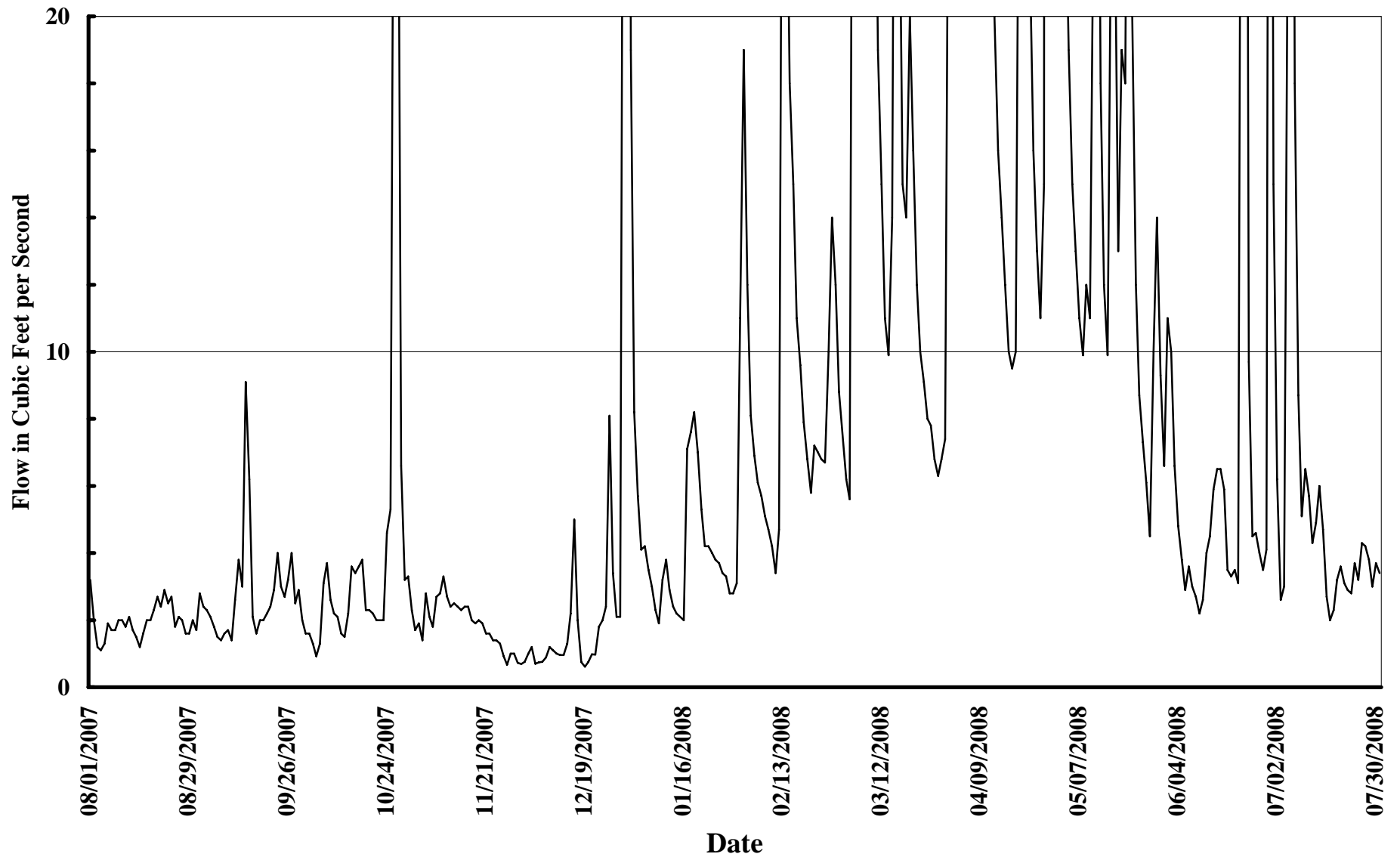


08/01/07-09/30/07: USGS data approved for publication.

10/01/07-07/31/08: USGS provisional data subject to revision.

ENO RIVER @ HILLSBOROUGH, #02085000

August 1, 2007 - July 31, 2008



08/01/07-09/30/07: USGS data approved for publication.

10/01/07-07/31/08: USGS provisional data subject to revision.

Status of Water Users:

Hillsborough

- Kenny Keel provided the status of Hillsborough's West Fork Eno Reservoir (WFER);
 - Since Gov. Easley's declaration (October 2007), Hillsborough's average use reduced by ~20%
 - WFER 2" below spilling,
 - Received approximately 5 inches of rainfall within the last week,
- Recent usage higher than average due to system flushing which was coordinated to occur while reservoirs were close to full,
- In late August 2007, spoke with Paul Thames and Orange County; decided to preserve the level of Lake Orange reservoir by releasing more than required from WFER.

Orange-Alamance

- Ben Lloyd gave a brief history of Orange-Alamance Water System Inc;
 - System began pumping water in 1969,
 - Recently lost Swepsonville sales (600 customers),
 - Currently serve approximately 3,400 customers,
- Eno River withdrawals are approximately 300,000 gpd,
- Total Orange-Alamance usage is approximately 650,000 gpd,
- Treatment plant has resumed running 5 days per week (8-9 hours per day),
- Reduced purchases from Haw River,
- If County allows more development, anticipate growth in customers.

Piedmont Minerals

- Randy Thomas reported Piedmont Minerals is shipping approximately one-third of the tonnage as it has historically,
- Due to decreased shipping their anticipated water use is less.

Eno River State Park

- Popularity of the park is increasing,
- Park received 400,000 visitors last year,
- Awaiting results of Neuse River Basin study,
- Last summer and fall, drought impacts and the slightest errors yielded dramatic effects (diminished flows).

Follow-up Items:

- Jim Mead gave a brief update concerning the Neuse River Basin Study;
 - The modeling contract was issued in February 2008,
 - The first technical committee review is anticipated late fall 2008 to early 2009,
 - Any technical committee suggestions will be used to adjust the model.
- Ms. Hartsell asked to speak on behalf of the Friends of Lake Orange about their concerns;
 - Friends of Lake Orange are 100 members strong,
 - Own property adjacent to Lake Orange reservoir,
 - Enjoy the recreational rights attached to the reservoir,
 - Have paid for deeds via Lake Orange, Inc. and their rights diminish when reservoir

- levels decline,
 - Would like to see representation of the landowners within the Eno Users Group,
 - Stressed that Orange County needs to put money into installing regulation equipment at Lake Orange reservoir,
 - Voicing their issues – if not spoken then can't be addressed.
- Linwood Peele addressed Ms. Hartsell's comments;
 - Landowners have use of water within the reservoir,
 - Owner of Lake Orange reservoir can restrict recreation use,
 - The Division of Water Resources must follow the rules defined by the EMC,
 - EMC defines users of the Eno River as those who withdraw water – Piedmont Minerals, Town of Hillsborough and Orange-Alamance.
- Michael Douglas emphasized;
 - The Division of Environmental Health is not trying to stop recreation on the reservoir,
 - The goal is to control recreation to protect its water quality.
- Friends of Lake Orange stressed;
 - They want to preserve the river from headwaters to tailwaters,
 - Recognize the impact drawdown has on both the business of Lake Orange, Inc. and the landowners.
- Robin Jacobs stressed;
 - The goal of the Eno River Association is to protect the Eno River from its headwaters to tailwaters.

Meeting Adjourn.