



SWEENEY EXPANSION

Keeping Pace with Growth
and Technology

Projected Raw Water Supply Needs

Raw Water Supply Need	2005	2010	2015	2020	2025	2030	2050
Average Day (MGD)	17.7	20.6	24.2	26.1	28.3	30.7	39.8
Max Day (MGD)	26.5	30.9	37.1	39.9	43.2	46.9	60.6

History of The Sweeney Water Treatment Plant

**Old WTP
Pre-1900**

**Residuals
Treatment
Facilities
1990**



**1998 Plant
Expansion
(25 mgd)**

**1958 Plant
Expansion
(15 mgd)**

**1943 South
Plant (7 mgd)**



BLACK & VEATCH
building a world of difference™

WILMINGTON
CITY OF
NORTH CAROLINA

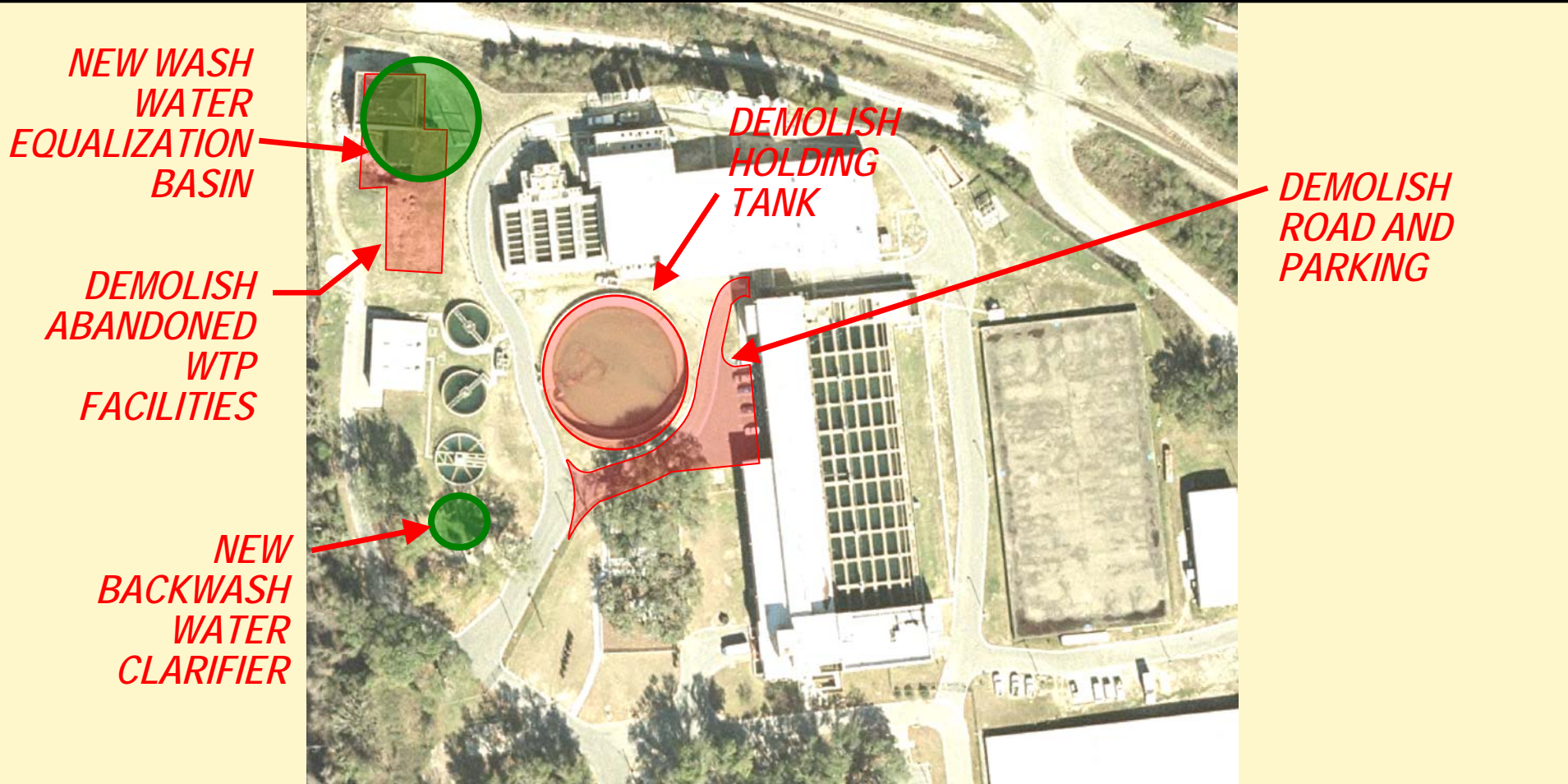
Current Expansion Project



BLACK & VEATCH
building a **world** of difference™

CITY OF
WILMINGTON
NORTH CAROLINA

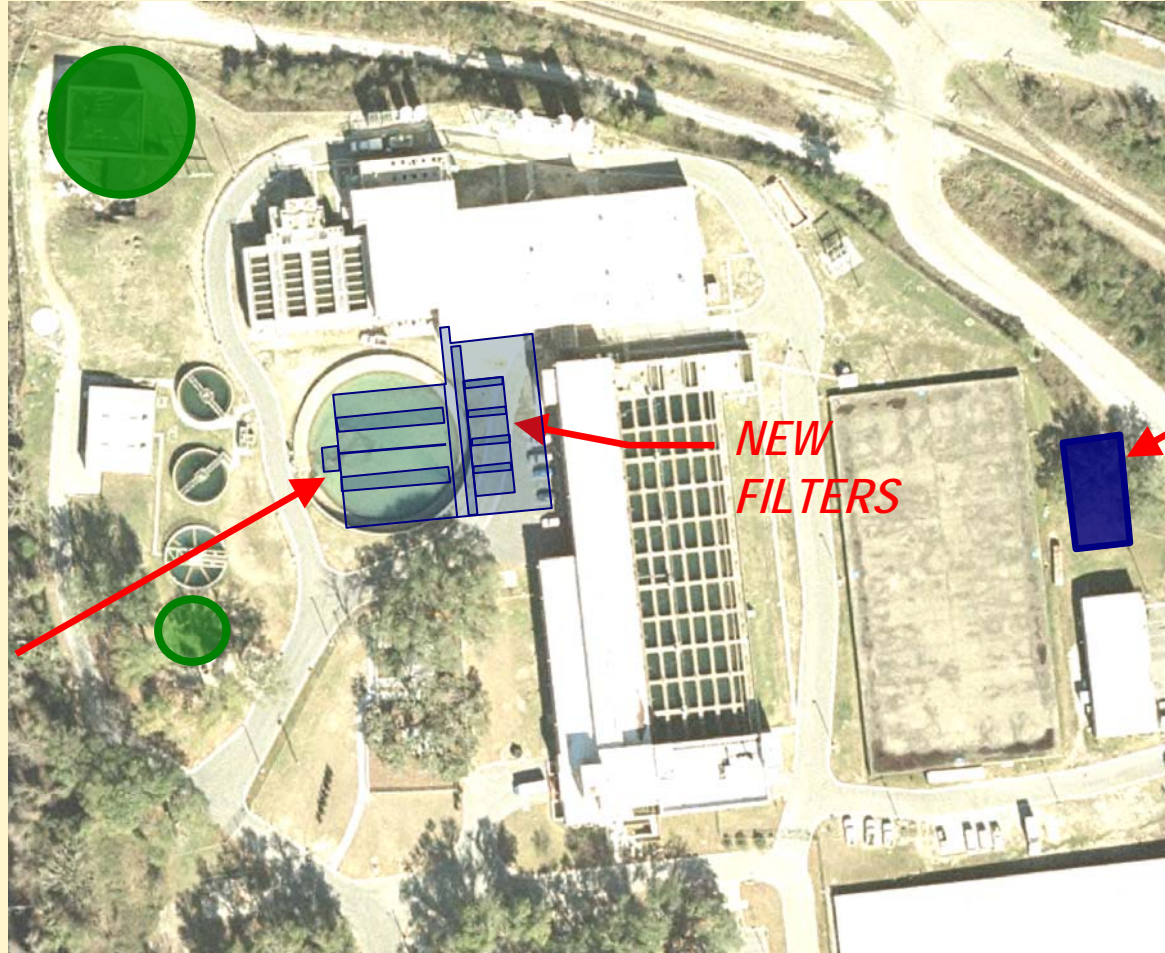
Current Expansion Project Phase 1



BLACK & VEATCH
building a world of difference™

CITY OF
WILMINGTON
NORTH CAROLINA

Current Expansion Project Phase 2



*NEW HIGH
SERVICE
PUMP STATION*

*NEW
FILTERS*

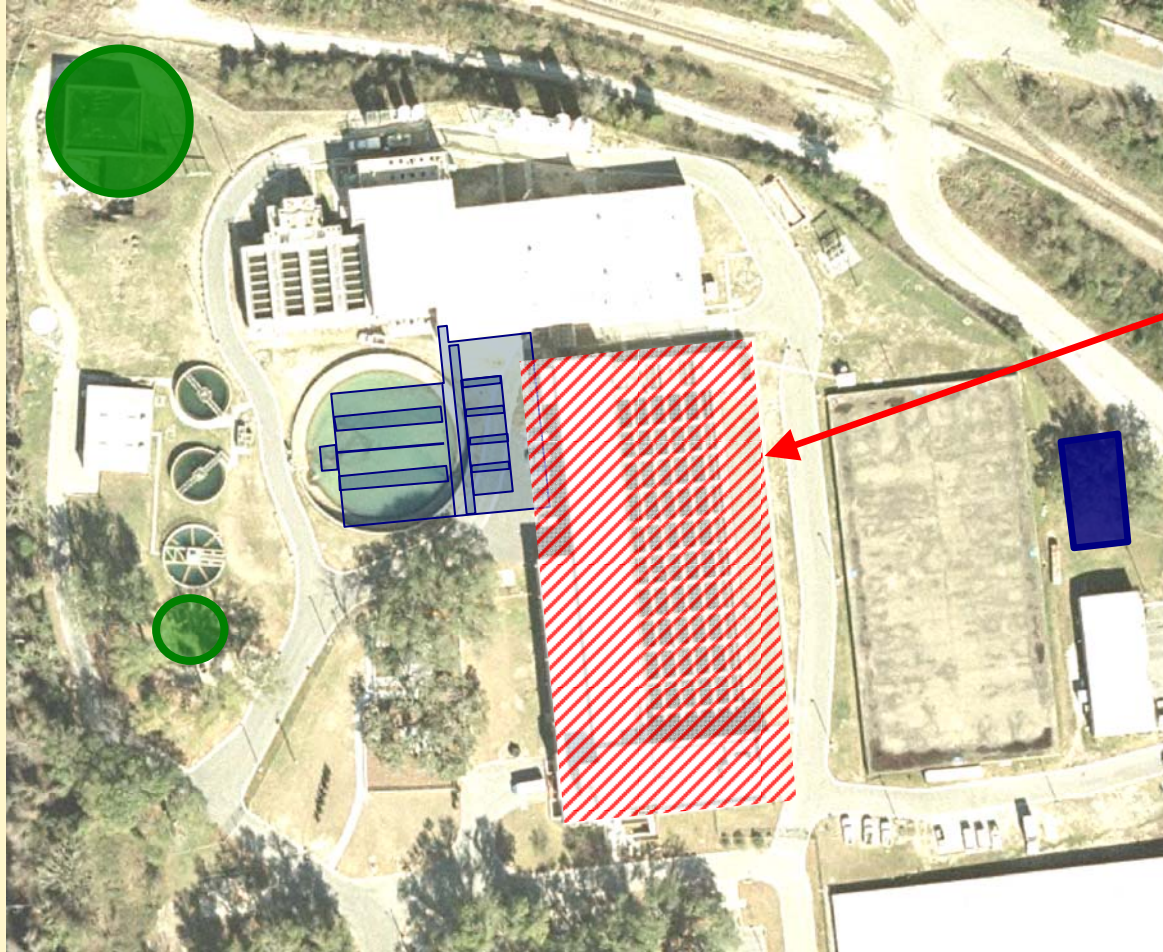
*NEW SUPER
PULSATORS*



BLACK & VEATCH
building a world of difference™

CITY OF
WILMINGTON
NORTH CAROLINA

Current Expansion Project Phase 3a



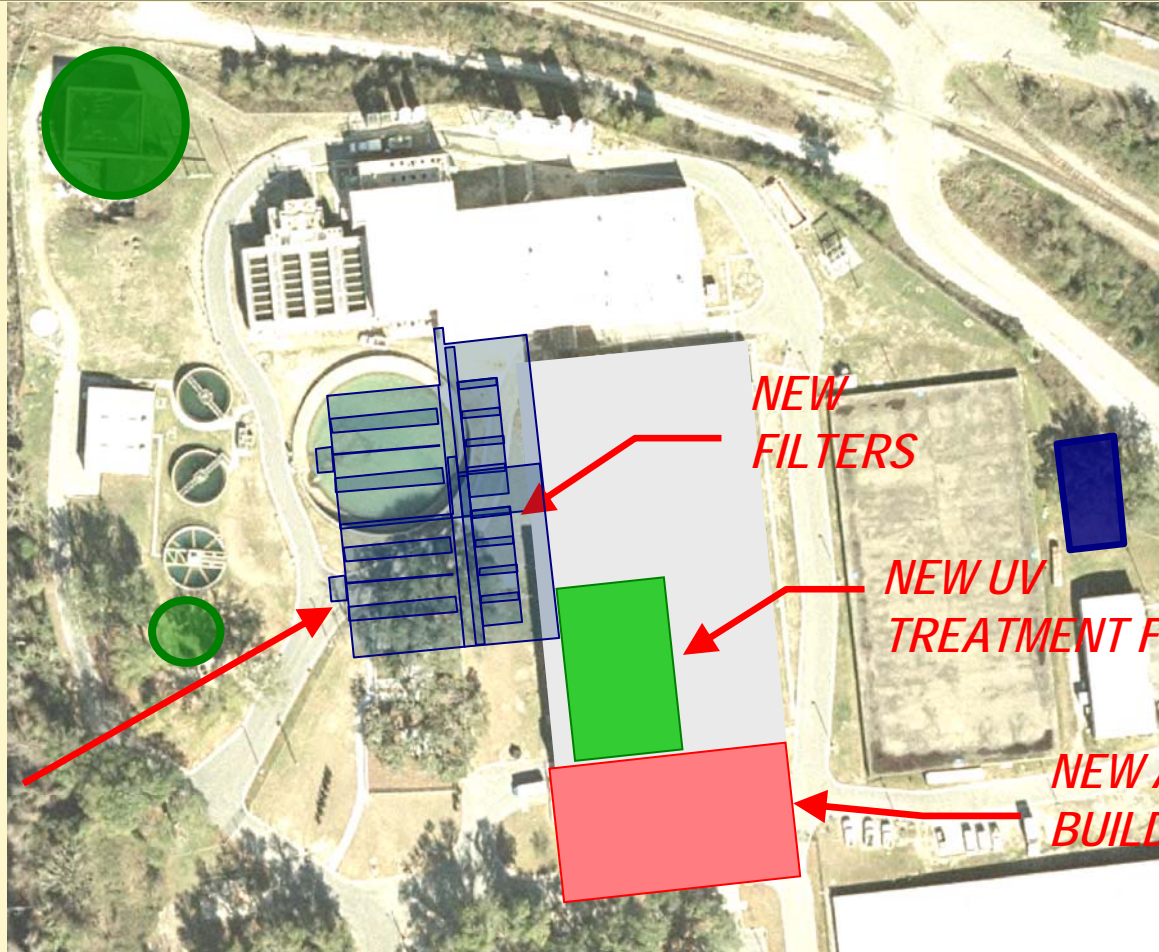
*DEMOLISH
SOUTH PLANT*



BLACK & VEATCH
building a world of difference™

CITY OF
WILMINGTON
NORTH CAROLINA

Current Expansion Project Phase 3b



*NEW SUPER
PULSATORS*

*NEW
FILTERS*

*NEW UV
TREATMENT FACILITY*

*NEW ADMIN
BUILDING*



BLACK & VEATCH
building a world of difference™

CITY OF
WILMINGTON
NORTH CAROLINA

Project Schedule

- Design Complete – February 2008
- Bidding – March 2008
- Phase 1 & 2 Construction Complete – March 2010
- Phase 3 Construction Complete – December 2011



Sweeney Water Treatment Plant Expansion