

Division of Water Resources

North Carolina

Department of Environment and Natural Resources

The Broad River Basin Water Resources Plan

Stakeholder Meeting #2

June 7 , 2011



Managing Water Resources to Support North Carolina's Future

Discussion Topics

I. Plan Contents

II. Tentative Plan Schedule

III. Stakeholder Process

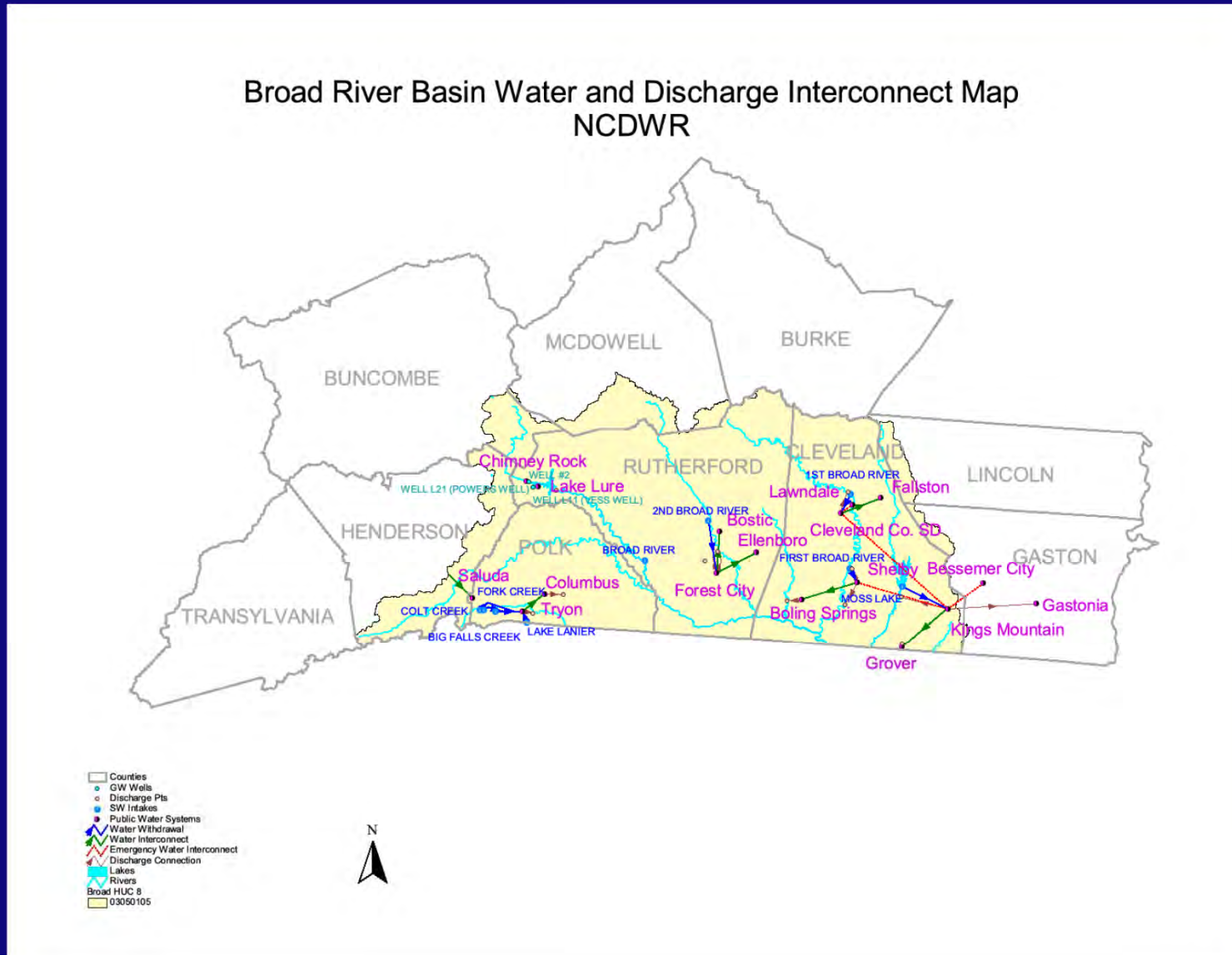
The Content of Water Resources Plan

1. Executive Summary
2. Introduction
3. River Basin Description
4. Conditions and Management Needs
5. River Basin Hydrologic Model
6. Hydrologic Unit Summaries
7. Other Water Resource Management Activities
8. Appendix

The water resources plan will follow the format of "*The Neuse River Basin Water Resources Plan*"
http://www.ncwater.org/Reports_and_Publications/Basin_Plans/neuse.php

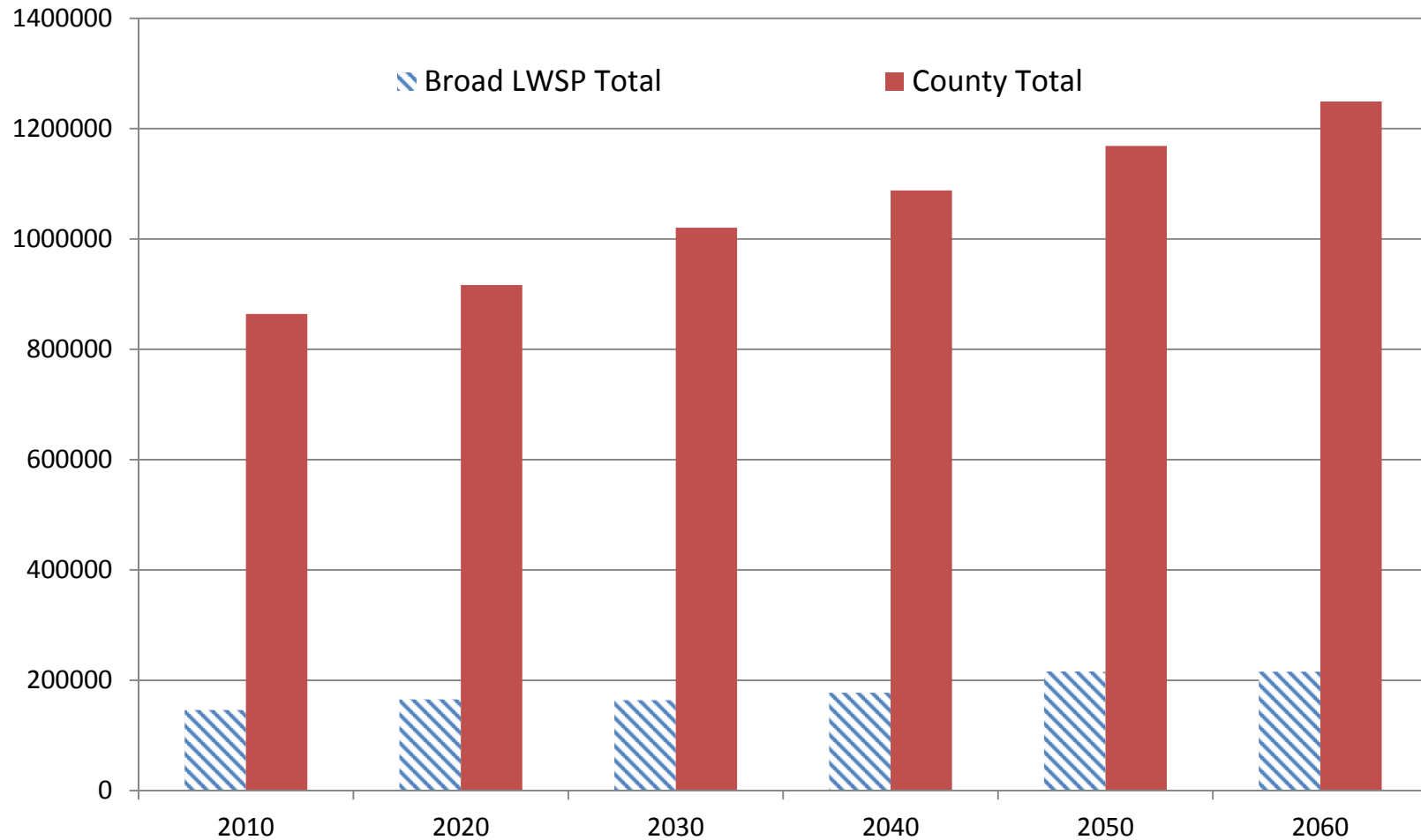
River Basin Description

Broad River Basin Water and Discharge Interconnect Map
NCDWR



River Basin Description

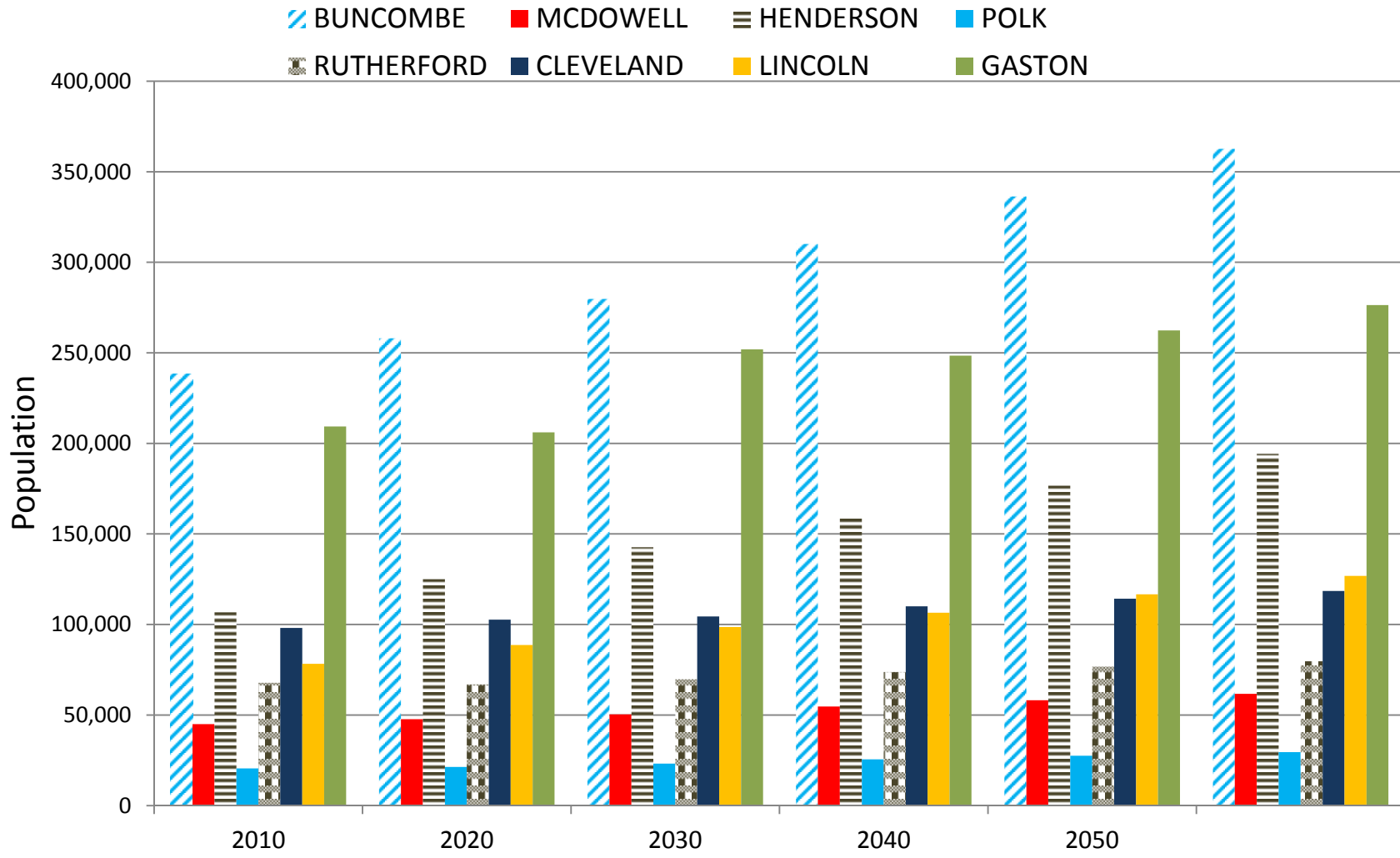
Broad Basin LWSP and County Total Population



LWSP - Local Water Supply Plan, 2009 data

River Basin Description

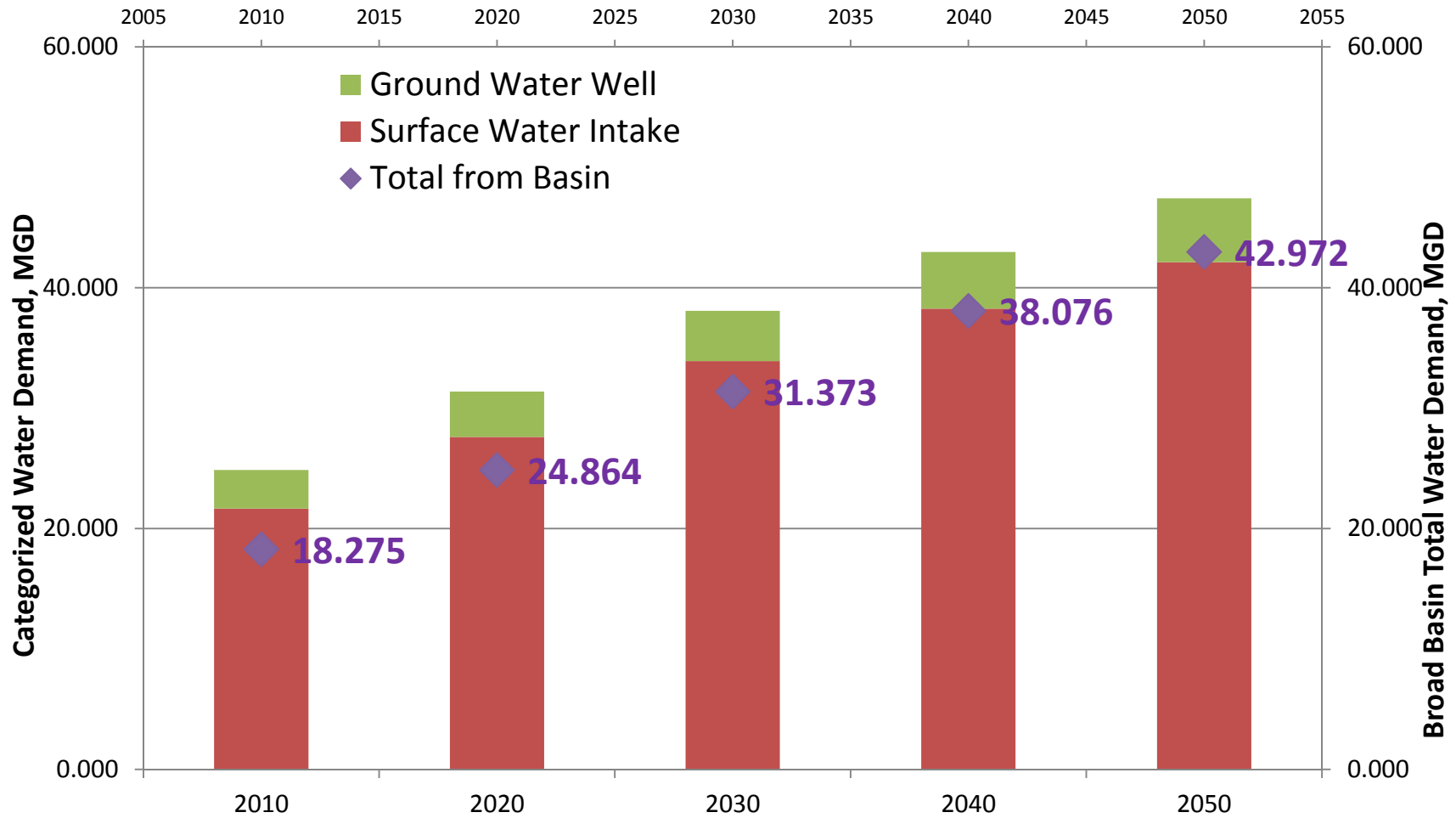
County Total Population Projection - source OSBM



OSBM - Office of State Budget and Management, 2010 data

River Basin Description

Broad Basin LWSP Water Demand Projections



LWSP - Local Water Supply Plan, 2009 data

Conditions and Management Needs



August drought 2002, Knob Creek



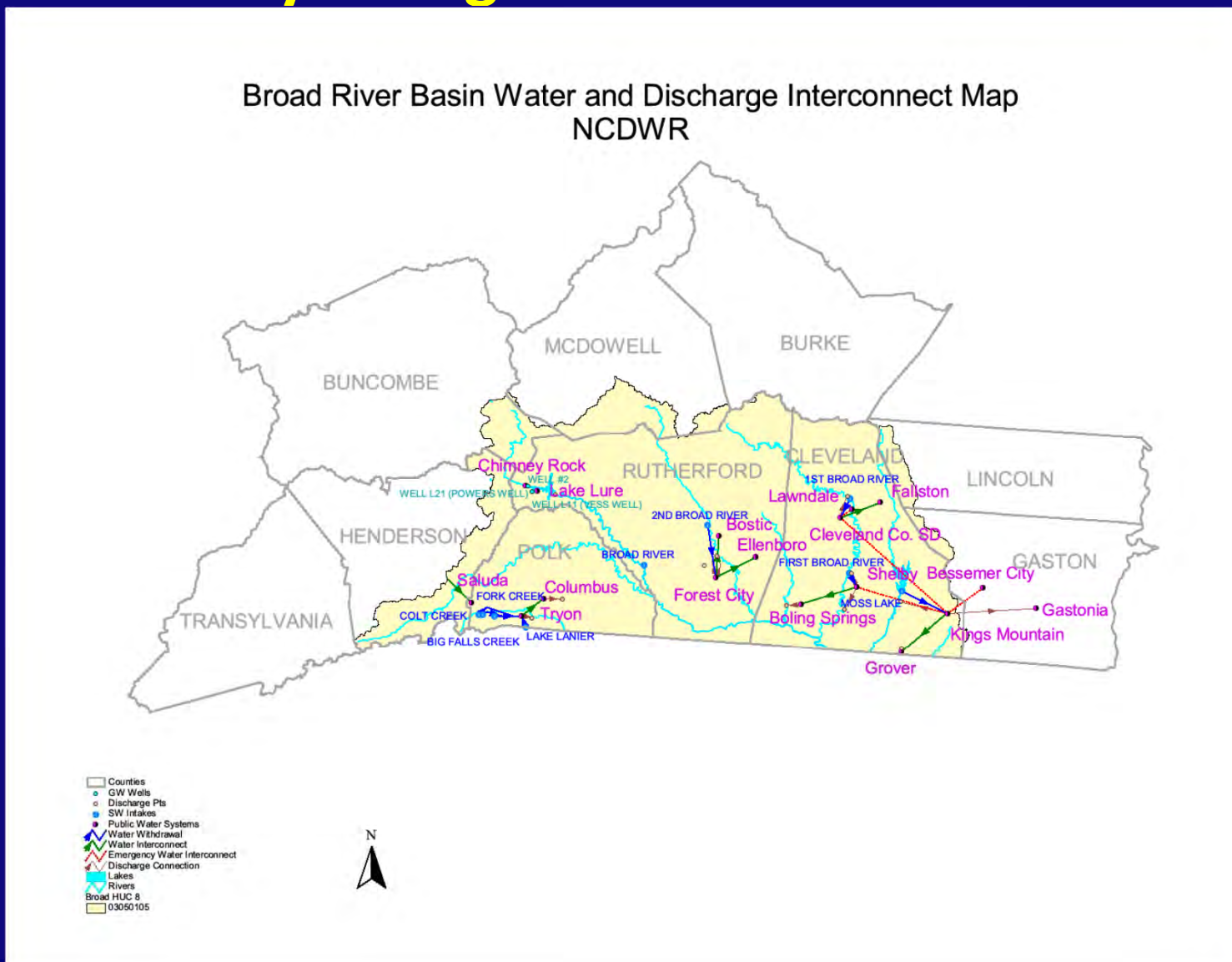
Tubing on the Green River



Big Bradley Falls

Hydrologic Unit Summaries

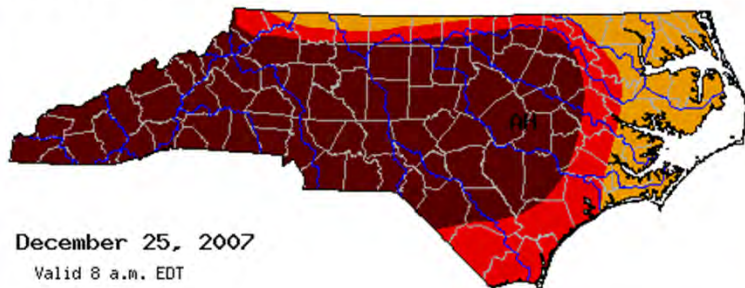
Broad River Basin Water and Discharge Interconnect Map
NCDWR



Other Water Resource Management Activities

- Drought Response Plan & Implementation
- Water Resources Development Projects
- Aquatic Weed Control

US Drought Monitor of
NORTH CAROLINA



December 25, 2007
Valid 8 a.m. EDT

Drought Classifications

- D0 - Abnormally Dry
- D1 - Moderate Drought
- D2 - Severe Drought
- D3 - Extreme Drought
- D4 - Exceptional Drought

- County Boundaries
- Major River Basins ([View Map](#))
- A** = Agricultural (crops, pastures, grasslands)
- H** = Hydrological (water)

[Hi-Resolution Image](#)

The U.S. Drought Monitor focuses on broad scale conditions. Information provided for North Carolina is relative to the information provided from all other states and the North Carolina Drought Management Advisory Council. Local conditions may vary.

Drought Monitoring and Response Planning

NORTH CAROLINA DEPARTMENT OF ENVIRONMENT AND NATURAL RESOURCES

DIVISION OF WATER RESOURCES

About Contact Jobs News Staff

WATER SHORTAGE RESPONSE PLANS

Home Learn Plans Upload

UPLOAD YOUR PLAN!

Submitting your Water Shortage Response Plan has never been easier. Just fill out our simple upload form and you're done. It's that easy!

CLICK UPLOAD TO GET STARTED...

<p>News</p> <p>11-12-2008 The system is online and ready for use.</p> <p>11-11-2008</p>	<p>Overview</p> <p>A Water Shortage Response Plan establishes authority for declaration of a water shortage, defines different stages of water shortage severity, and outlines appropriate responses for each stage.</p>	<p>Contact Info</p> <p>If you have questions or comments regarding Water Shortage Response Planning please contact the following:</p>
--	---	--

Water Resources Plan – Tentative Schedule

To date

- Stakeholder identification and organization
- Kickoff meeting, October 10, 2010
- Preliminary descriptive work ongoing
- Hydrologic model development
- Stakeholder meeting #2, June 7, 2011

Water Resources Plan – Tentative Schedule

Next Phase

- Complete Hydrologic Model
 - Incorporate operating rules and drought plans
 - Develop scenarios for model runs
 - Preliminary model demo, summer 2011
- Plan Development
 - Sections of draft plan available for review, winter 2011
 - One or more subsequent public comment periods
 - Final document prepared within two months of closure of public comment period

Water Resources Plan Participation

Division of Water Resources:

512 N. Salisbury Street, Raleigh, NC 27699-1611

Phone: 919-733-4064

- Homepage:

<http://www.ncwater.org>

- Tar-Pamlico page:

<http://www.ncwater.org/basins/Broad>

- Contact us, ask questions, provide inputs, request model account:

dwr-broad-staff@lists.ncmail.net

- E-mail listserv subscriptions:

<http://lists.ncmail.net/mailman/listinfo/dwr-broad>