



**Western Wake Communities
Interbasin Transfer Requirements:
Update on Progress in Returning
Water to the Cape Fear River
Basin**

***Towns of Apex, Cary, and
Morrisville and Wake County
(RTP South)***

January 9, 2007

Presentation Topics

- Drought Management Actions
- Background on IBT Certificate requirements
- Planning for New Wastewater Facilities
- Regulatory process
- Schedule for Project
- Actions related to IBT Compliance
- Discussion

Water Resources Management

- **Conservation program**
 - Conservation rate structure
 - Public education program
 - Drought stage related water restrictions
- **Water reclamation program**
- **Integrated Water Resources Management Plan**

Regional Cooperation

- **Inter-connections with Durham**
 - Current ability to transfer 2 mgd
 - Expansion to 4 mgd in January 2008
 - No IBT Implications
- **Inter-connections with Raleigh**
 - Ability to transfer 4-10 mgd (pending engineering investigations)
 - Jordan Lake allocation and IBT issues
- **Other Regional support**
 - OWASA transfer discussions (through Durham)

Presentation Topics

- Drought Management Actions
- Background on IBT Certificate requirements
- Planning for New Wastewater Facilities
- Regulatory process
- Schedule for Project
- Actions related to IBT Compliance
- Discussion

IBT Certificate

- Issued in July 2001
 - Approximately 6 years for SEPA and issuance process
- Certificate holders include Towns of Cary, Apex and Morrisville and Wake County (RTP South)
- Requirements
 - Max day IBT of 24 mgd
 - Several conditions

Condition 1 of Western Wake Communities IBT Certificate

- After 2010, water supplied from the Haw Basin shall be returned to either the Haw or Cape Fear Basin
 - Any water used in the Neuse basin in excess of an average daily usage of 16 mgd shall be returned
 - Consumptive use is excluded from this calculation
- Certificate includes a formula for calculating the required annual return amount

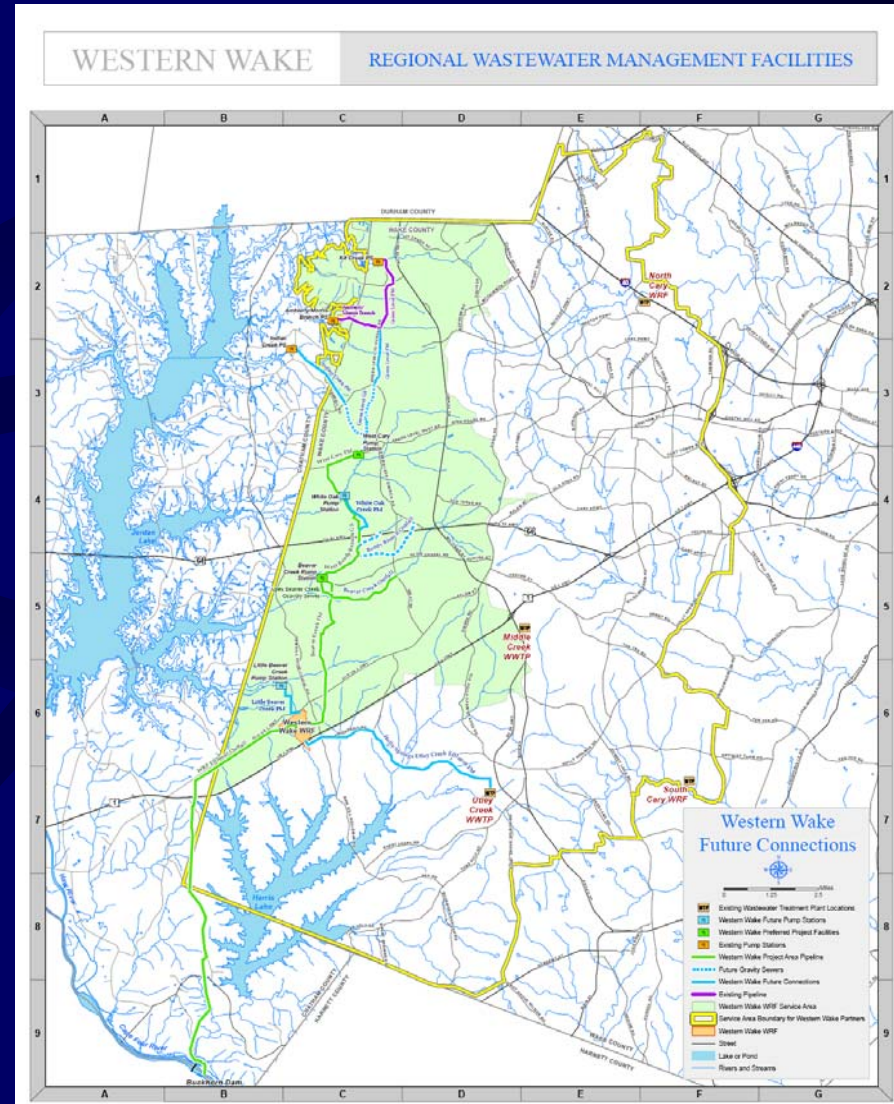
Presentation Topics

- Drought Management Actions
- Background on IBT Certificate requirements
- **Planning for New Wastewater Facilities**
- Regulatory process
- Schedule for Project
- Actions related to IBT Compliance
- Discussion

Western Wake Regional Wastewater Management Facilities

Description of Proposed Regional Project

- 2 raw WW pump stations, 8.5 miles pipeline
- 18 mgd WRF (1st phase)
- Effluent pump station, 13.4 miles pipeline



Presentation Topics

- Drought Management Actions
- Background on IBT Certificate requirements
- Planning for New Wastewater Facilities
- Regulatory process
- Schedule for Project
- Actions related to IBT Compliance
- Discussion

NEPA EIS

- **Lead by USACE in partnership with**
 - DENR
 - Western Wake Partners
- **Using a Project Delivery Team to address key issues**
 - **Monthly PDT Meetings**
 - **Membership includes**
 - State and Federal agencies
 - Project Partners
 - Other local governments – Wake and Chatham Counties
 - Interested citizens – New Hill Community Members

NEPA EIS Progress

- **7 PDT Meetings held**
 - Four alternative WRF sites identified for evaluation
- **Field evaluation of sites to begin shortly**
- **Public information program initiated**

Presentation Topics

- Drought Management Actions
- Background on IBT Certificate requirements
- Planning for New Wastewater Facilities
- Regulatory process
- Schedule for Project
- Actions related to IBT Compliance
- Discussion

Schedule

2007-2008

- Development of Environmental Impact Statement by Corps of Engineers including:
 - Public comment period on Draft EIS
 - Public hearing
 - Publication of Final EIS
 - Record of Decision

2008-2009

- Application for and receipt of permits:
 - NPDES permit issued by NCDENR
 - 401 Certification issued by NCDENR
 - 404 Wetlands permit issued by Corps of Engineer
 - Authorization to Construct permits issued by NCDENR

2010-2013

- Construction

2013

- Operation of facilities begins

Presentation Topics

- Drought Management Actions
- Background on IBT Certificate requirements
- Planning for New Wastewater Facilities
- Regulatory process
- Schedule for Project
- Actions related to IBT Compliance
- Discussion

IBT Certificate Compliance Actions

- **Return of Water to Haw or Cape Fear Basin after 2010**
 - Cary has ILA with Durham County for up to 5 mgd of capacity at the Triangle WWTP
 - Projected required average return for 2011 of 2.1 mgd
- **Reclaimed water master plan**
 - Average day reclaimed water use of 1.3 mgd
 - Max day reclaimed water use of 4.8 mgd
- **Max day IBT compliance is an issue**
 - Exacerbated by delay in Western Wake WRF
 - Options to address issues are being considered

Continued Compliance

- **Condition 1 of Certificate**
 - Return of reclaimed water to Haw River subbasin via Durham Co. WRF meets condition requirements
- **Max day IBT compliance options**
 - Purchase water from Neuse Basin utility
 - Build facilities to transfer water on max day
 - Request modification of IBT certificate

Presentation Topics

- Drought Management Actions
- Background on IBT Certificate requirements
- Planning for New Wastewater Facilities
- Regulatory process
- Schedule for Project
- Actions related to IBT Compliance
- Discussion

