



Interbasin Transfer Request

Presented to
North Carolina Environmental Management Commission
Water Allocation Committee
May 12, 2010

Neuse Regional WASA Representatives

- Wayne Malone
Chairman, Neuse Regional WASA
- Harold Herring
Executive Director, Neuse Regional WASA
- Wayne Miles, P.E., BCEE
Senior Associate, CDM

Summary of NRWASA Request

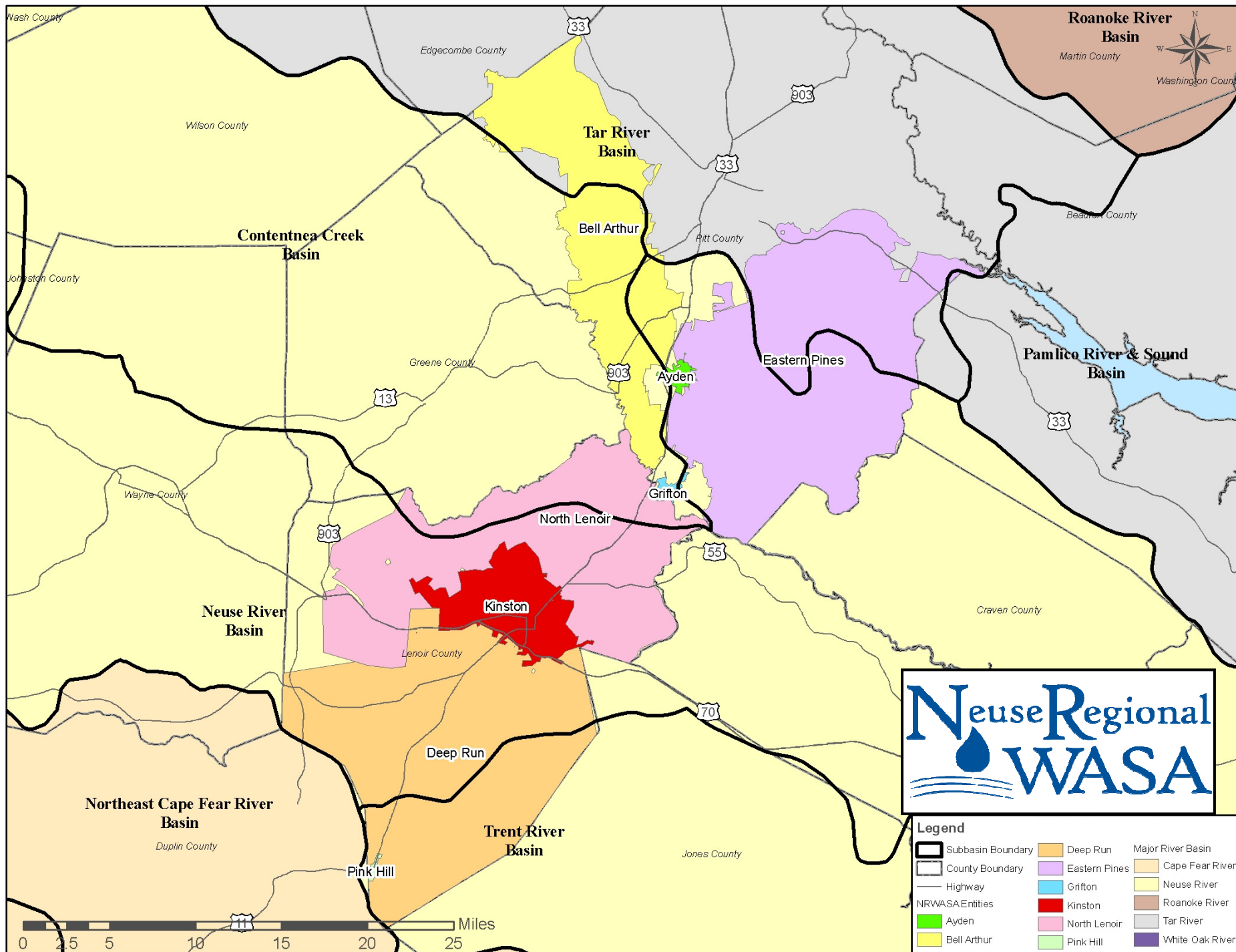
- NRWASA intends to secure an interbasin transfer certificate to maintain compliance with the CCPCUA rules into the future
- NRWASA intends to proceed in accordance with general statute as it pertains to CCPCUA communities
- Insufficient time remains until January 1, 2011 to delay submittal of petition until FONSI / ROD is received

Summary of NRWASA Request

- Statute gives the EMC authority to determine what is meant by requirement that an inter-basin transfer (IBT) petition “shall be considered and acted upon” by the EMC
- NRWASA commits to delivering a petition to the EMC for consideration in accordance with the proposed path forward
- NRWASA respectfully requests the EMC concur with the proposed path forward

Introduction to Neuse Regional WASA (NRWASA)

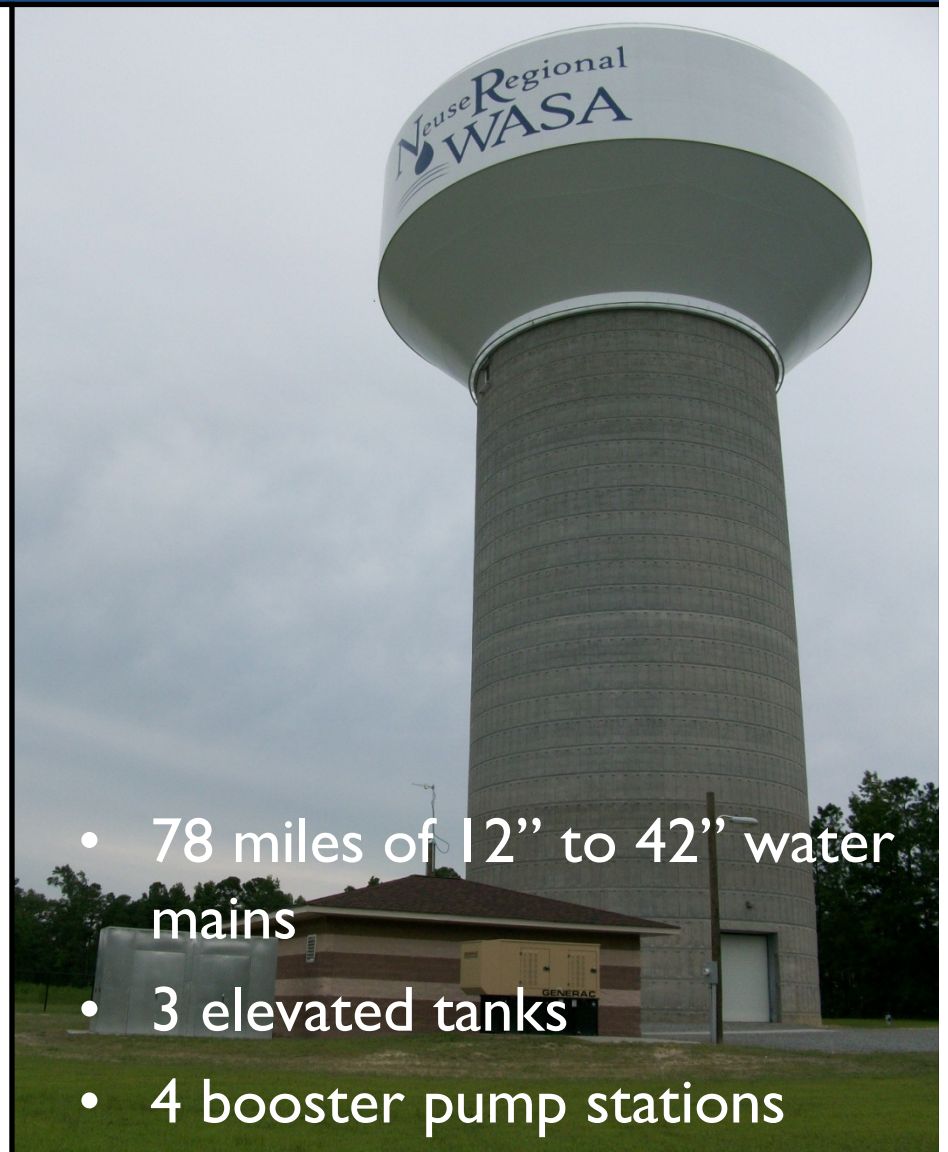
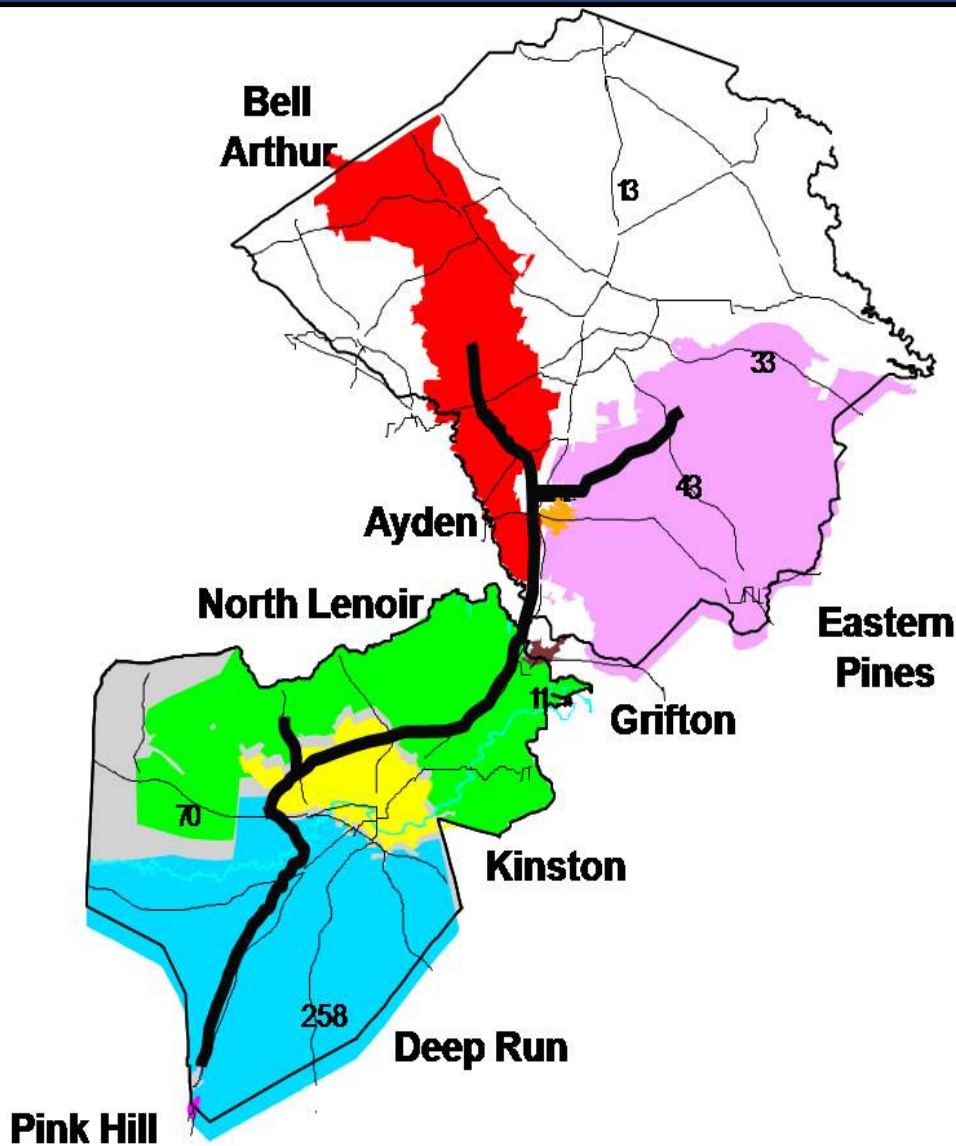
- Formed in 2000 to provide regional response to the EMC's Central Coastal Plain Capacity Use Area (CCPCUA) rules
- Includes eight member communities and water systems
- \$146M surface water treatment and transmission system operational in September 2008



NRWASA 15 mgd Surface Water Treatment Plant

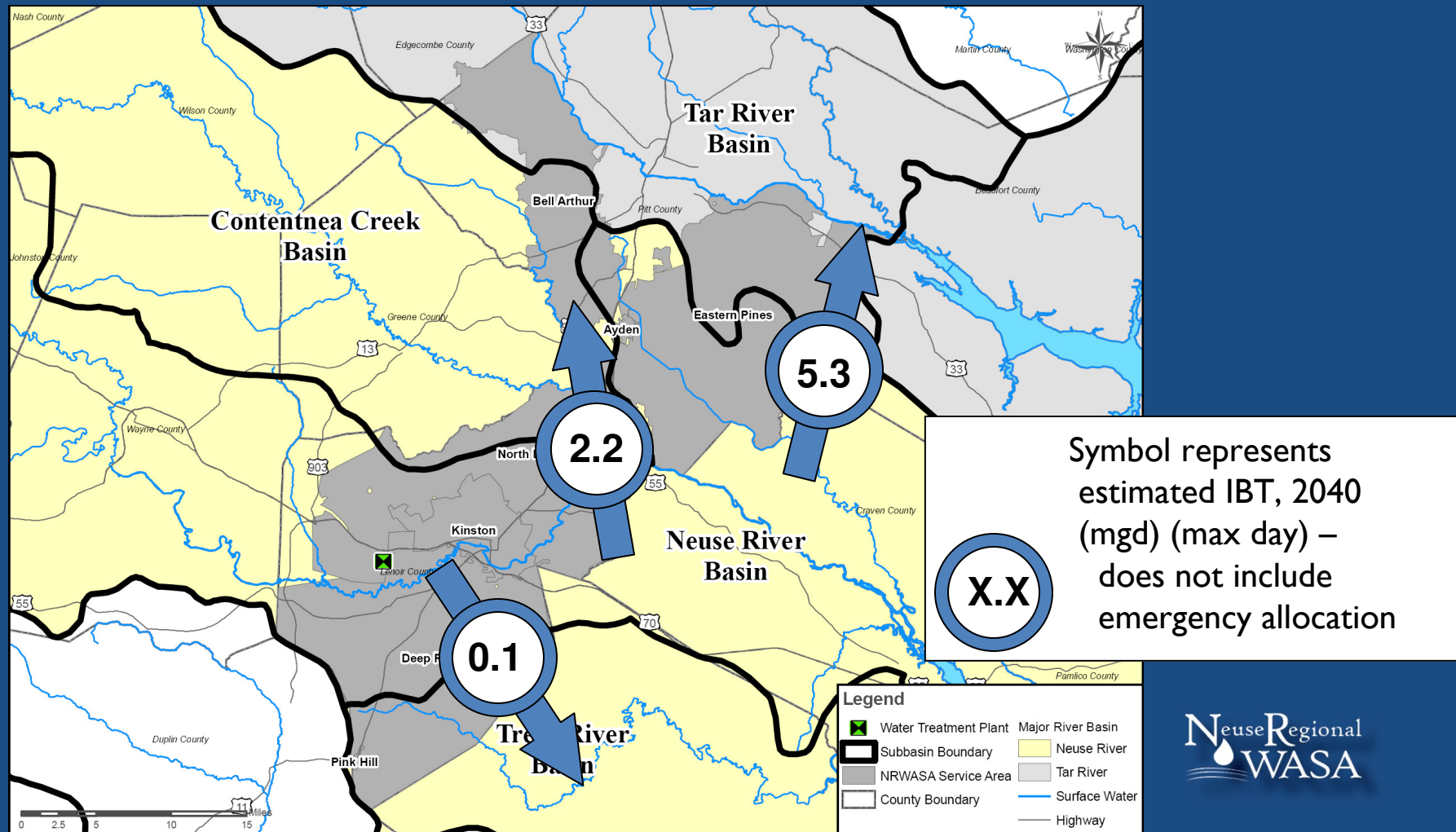


NRWASA Water Transmission System



- 78 miles of 12" to 42" water mains
- 3 elevated tanks
- 4 booster pump stations

NRWASA Is Seeking EMC Approval for an IBT Certificate to Remain in Compliance with CCPCUA Rules



NRWASA Plans to Submit a Petition to the EMC for Interbasin Transfer Certification

- Procedure is outlined in NCGS 143-215-22 L Section 7 (b) as it pertains to Central Coastal Plain Capacity Use Area (CCPCUA) communities; specifically:
 - EMC considers petition pursuant to procedures and standards set out in *NCGS 143-215-22 I* on July 1, 2007
 - EMC considers and acts upon the petition by January 1, 2011

NRWASA's Proposed Petition Would Include the Following:

- Demand Projections and Proposed Water Uses
- Growth Trends
- Description of Facilities
- Water Conservation Practices
- Alternatives to an Interbasin Transfer
- CCPCUA Management Strategy
- Interbasin Transfer Management Strategy
- Schedule for completing environmental documents

NRWASA Requests the EMC to Act Favorably on this Request for Three Reasons:

- This request is consistent with applicable statutes.
- NRWASA made a substantial investment to achieve early compliance with the EMC's CCPCUA rules.
- The NRWASA needs an IBT certificate to maintain compliance with both CCPCUA and IBT rules.

NRWASA Requests the EMC to Act Favorably on this Request for Three Reasons:

- This request is consistent with applicable statutes.
- NRWASA made a substantial investment to achieve early compliance with the EMC's CCPCUA rules.
- The NRWASA needs an IBT certificate to maintain compliance with both CCPCUA and IBT rules.

NCGS 143-215-221.(c) Provides the
EMC with the Ability to Determine
What Constitutes a **Petition**:

- 1) A description of the facilities to be used to transfer water.
- 2) A description of proposed uses of water to be transferred.
- 3) Water conservation measures to be used...to avoid waste.
- 4) **Any other information deemed necessary by the Commission.**

NRWASA's Proposed Path Forward Will Secure all Necessary Approvals in the Appropriate Sequence

- EMC would only send petition forward for public hearing if DWR is able to issue a FONSI or ROD for environmental documents
- State Clearinghouse, Agency, and Environmental Community reviews and comment periods will be consistent with state statutes

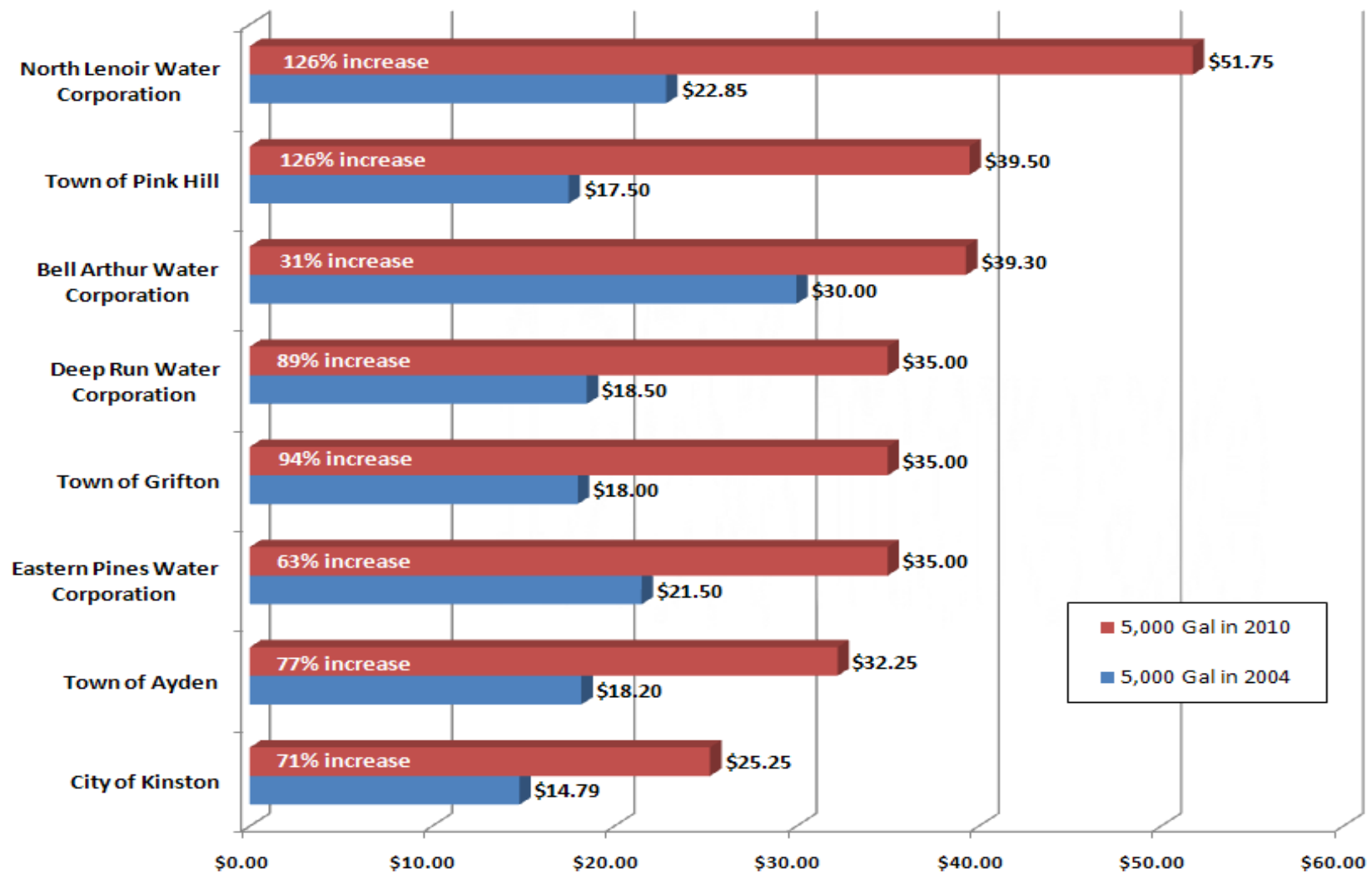
NRWASA Requests the EMC to Act Favorably on this Request for Three Reasons:

- This request is consistent with the statutes.
- NRWASA made a substantial investment to achieve early compliance with the EMC's CCPCUA rules.
- The NRWASA needs an IBT certificate to maintain compliance with both CCPCUA and IBT rules.

Federal, State, and NRWASA Financial Contributions for CCPCUA Compliance

- \$48,877,184 in Total Grants & Contributions
 - \$867,300 – EPA SPAP Grant FY03
 - \$964,300 – EPA SPAP Grant FY04
 - \$286,000 – EPA SPAP Grant FY08
 - \$25,730,000 – USDA Grant Commitments
 - \$7,100,000 – NC Division of Water Resources
 - \$1,380,000 – Rural Center
 - \$372,543 – Tobacco Trust Fund
 - \$12,177,041 – Member Contributions & Investments
- \$70,750,000 in USDA Loans (38 year term)
- \$26,742,000 in SRF Loans
- TOTAL = \$146,369,184

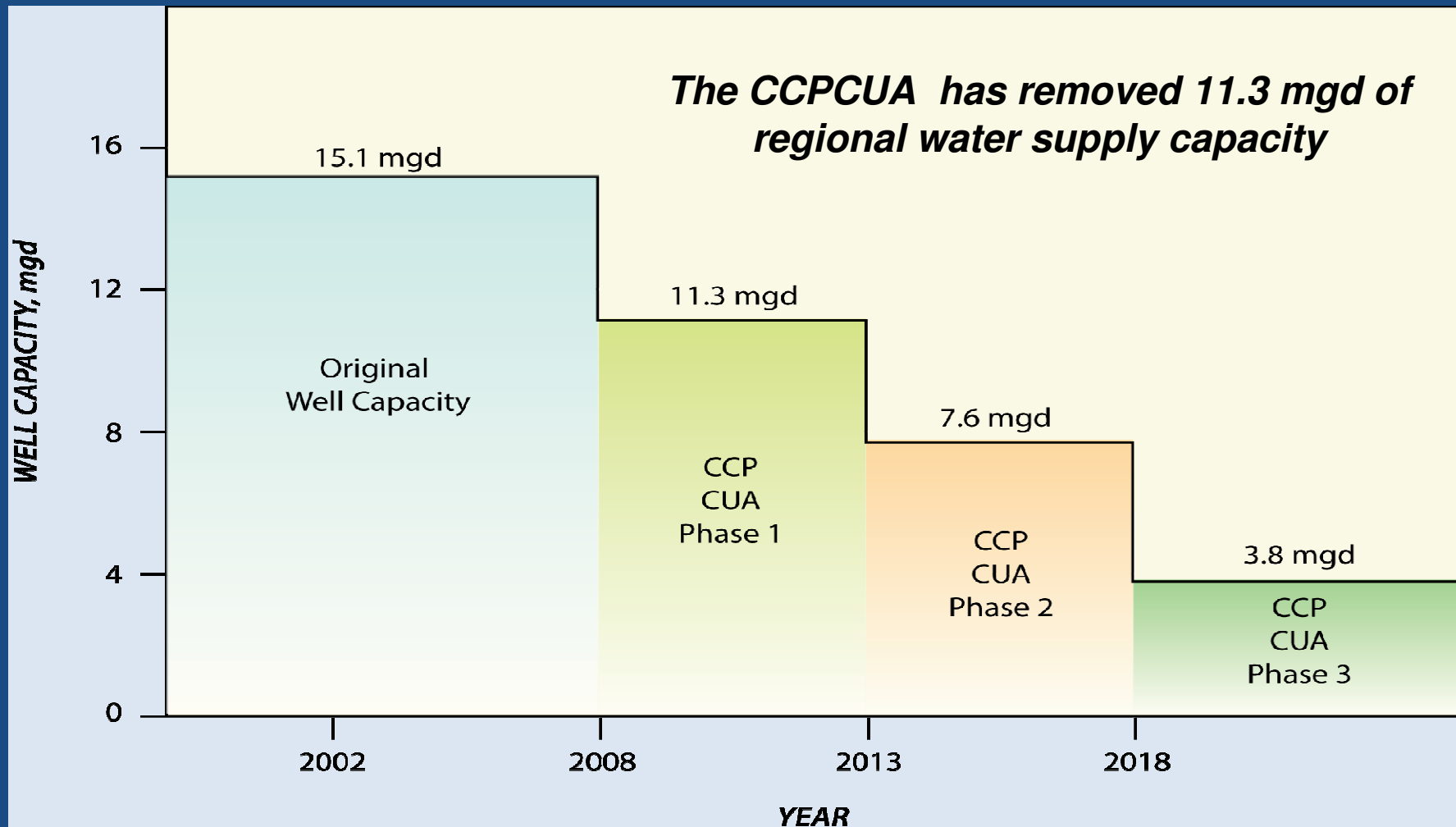
NRWASA Member Water Rates Have Increased Significantly to Comply with CCPCUA Rules



NRWASA Requests the EMC to Act Favorably on this Request for Three Reasons:

- This request is consistent with the statutes.
- NRWASA made a substantial investment to achieve early compliance with the EMC's CCPCUA rules.
- The NRWASA needs an IBT certificate to maintain compliance with both CCPCUA and IBT rules.

The NRWASA Needs an IBT Certificate to Maintain Operational Flexibility in Complying with CCPCUA Rules



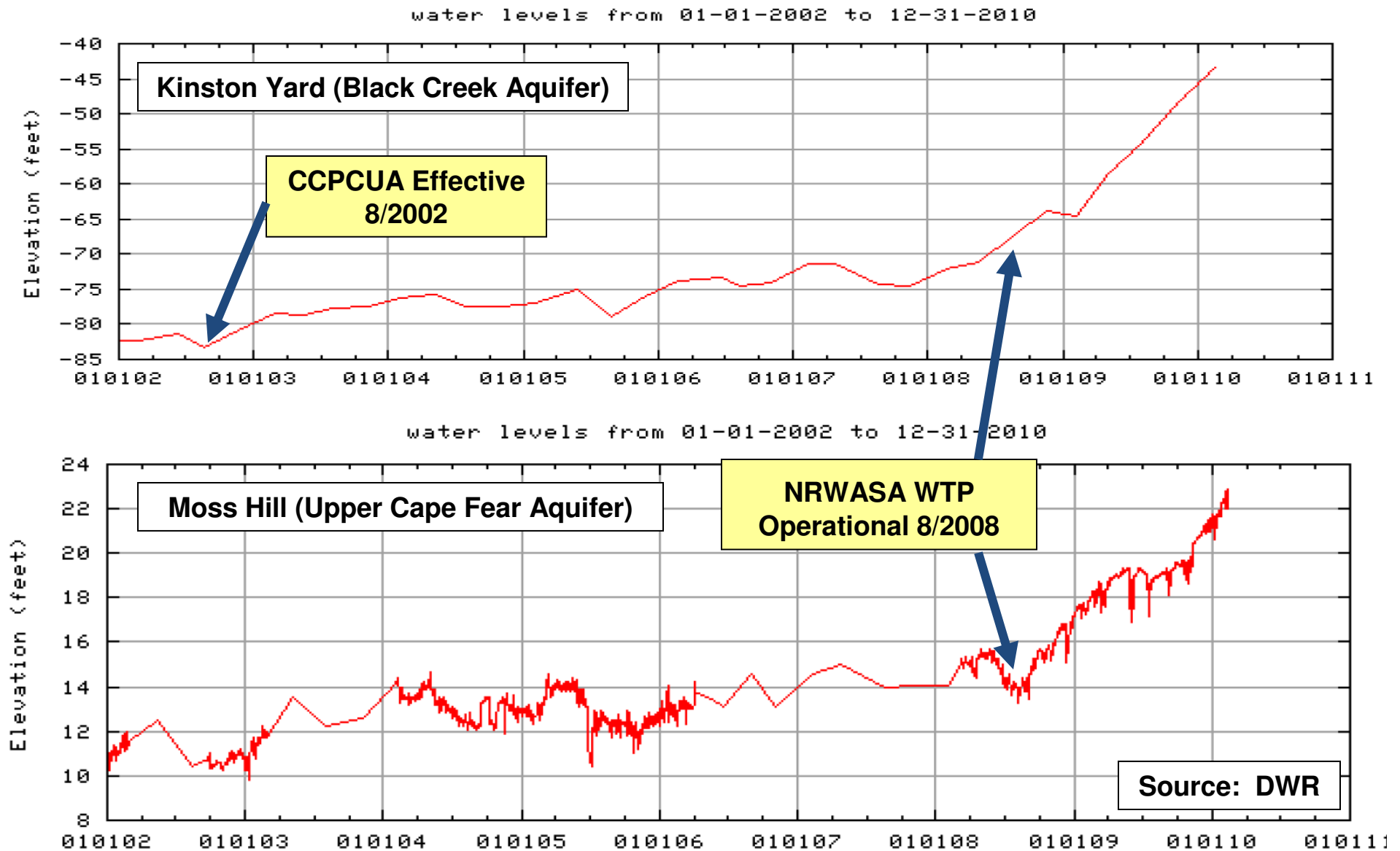
NRWASA's Project Complied with the CCPCUA Rules Schedule

CCPCUA
Effective
8/1/02

**Phase I
Reduction
Effective
8/1/08**

[illegible]

NRWASA Met the CCPCUA's 75% Reduction Target in 2008 and the Aquifers Have Responded



The Neuse Regional WASA Respectfully Requests that the WAC:

- Support the Neuse Regional WASA request for an interbasin transfer (IBT) certificate under the Central Coastal Plain Capacity Use Area IBT rules.
- Recommend that the WASA be allowed to submit an IBT petition prior to January 1, 2011 and before environmental documents are complete.

An aerial photograph of a wastewater treatment plant. The image shows several large, rectangular concrete tanks filled with water. Some tanks have a greenish tint, while others are a clear blue. Walkways with metal railings and stairs connect the different levels of the facility. In the background, there's a grassy area and some trees. The sky is clear and blue.

Questions and Discussion

Thank you for your
consideration